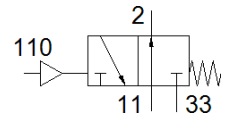
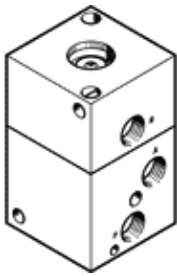


Basic valve LOCB-3-1/4

Part number: 556345

FESTO



Data sheet

Feature	Value
Valve function	3/2 open, monostable
Type of actuation	pneumatic
Width	50 mm
Standard nominal flow rate	600 l/min
Operating pressure MPa	0.2 ... 1 MPa
Working pressure	2 ... 10 bar
Design structure	Poppet seat
Type of reset	mechanical spring
Nominal size	6.5 mm
Assembly position	Any
Pilot pressure MPa	0.1 ... 1 MPa
Pilot pressure	1 ... 10 bar
Operating medium	Compressed air in accordance with ISO8573-1:2010 [7:4:4]
Note on operating and pilot medium	Lubricated operation possible (subsequently required for further operation)
Corrosion resistance classification CRC	2 - Moderate corrosion stress
PWIS conformity	VDMA24364-B1/B2-L
Medium temperature	-10 ... 60 °C
Ambient temperature	-10 ... 60 °C
Product weight	495 g
Mounting type	with through hole
Pilot air port 12	M20x1
Pneumatic connection, port 1	G1/4
Pneumatic connection, port 2	G1/4
Pneumatic connection, port 3	G1/4
Material seals	NBR
Material housing	Aluminum Anodized