

# Solenoid valve

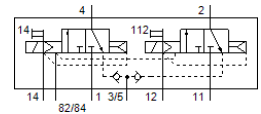
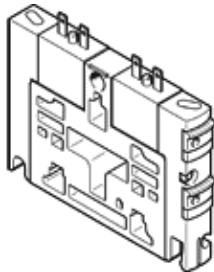
## CPV10-M1H-2X3-GLS-Y-M7

Part number: 553260

Classic - do not use for new projects

FESTO

Modern alternatives can be found by entering the first four characters of the type code in the search field.



## Data sheet

| Feature                                 | Value   |
|---|---|
| Valve function                          | 2x3/2 closed, monostable  |
| Type of actuation                       | electrical  |
| Valve size                              | 10 mm   |
| Standard nominal flow rate              | 400 l/min   |
| Operating pressure MPa                  | 0.01 ... 1 MPa  |
| Working pressure                        | 0.1 ... 10 bar  |
| Design structure                        | Piston slide  |
| Type of reset                           | Air spring  |
| Protection class                        | IP65  |
| Nominal size                            | 4 mm  |
| Exhaust-air function                    | not throttleable  |
| Sealing principle                       | soft  |
| Assembly position                       | Any   |
| Manual override                         | detenting<br>Pushing  |
| Type of piloting                        | Piloted   |
| Pilot air supply                        | external<br>Internal  |
| Flow direction                          | non reversible  |
| Lap                                     | Positive overlap  |
| Pilot pressure MPa                      | 0.3 ... 0.8 MPa   |
| Pilot pressure                          | 3 ... 8 bar   |
| b value                                 | 0.4   |
| C value                                 | 1.6 l/sbar  |
| Switching time off                      | 25 ms   |
| Switching time on                       | 17 ms   |
| Duty cycle                              | 100% with holding current reduction   |
| Electrical power consumption            | 0.46 W  |
| Max. positive test pulse with logic 0   | 1,400 µs  |
| Max. negative test pulse with logic 1   | 700 µs  |
| Operating medium                        | Compressed air in accordance with ISO8573-1:2010 [7:4:4]                    |
| Note on operating and pilot medium      | Lubricated operation possible (subsequently required for further operation) |
| Corrosion resistance classification CRC | 2 - Moderate corrosion stress   |
| PWIS conformity                         | VDMA24364-B1/B2-L   |
| Storage temperature                     | -20 ... 40 °C   |
| Medium temperature                      | -5 ... 50 °C  |
| Ambient temperature                     | -5 ... 50 °C  |
| Product weight                          | 70 g  |
| Mounting type                           | with through hole   |
| Auxiliary pilot air port 12/14          | Common line   |
| Pilot exhaust port 82/84                | Common line   |
| Pneumatic connection, port 1            | Common line   |

| Feature                      | Value   |
|------------------------------|---|
| Pneumatic connection, 11     | Common line                                       |
| Pneumatic connection, port 2 | M7  |
| Pneumatic ports 3/5 combined | Common line                                       |
| Pneumatic connection, port 4 | M7  |
| Materials note               | Conforms to RoHS                                  |
| Material seals               | HNBR<br>NBR                                       |
| Material housing             | Aluminum die cast<br>Brass<br>POM<br>PPS<br>Steel |