

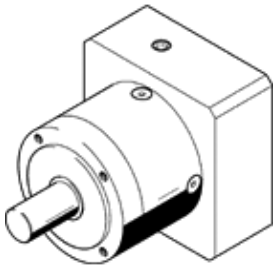
# Gearbox EMGA-80-P-G5-SAS-100

Part number: 552195

★ Core product range

Suitable for servo motors.

FESTO



## Data sheet

Feature	Value
Gear unit flange size	80 mm
Motor flange size	100 mm
Torsional backlash	0.12 deg
Type of gear unit	Planetary gear unit
Gear unit ratio	5:1
Max. input speed	7,000 1/min
Temperature range of gear unit	-25 ... 90 °C
PWIS conformity	VDMA24364-B2-L
Protection class	IP54
Continuous output torque	110 Nm
Mass moment of inertia of gear unit	0.45 kgcm <sup>2</sup>
Max. output torque	176 Nm
Max. efficiency	98 %
Torsional resistance	6 Nm/arcmin
Product weight	2,100 g
Gear unit interface, output shaft	80G
Gear unit interface, drive shaft	100A
Materials note	Conforms to RoHS