

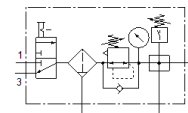
Service unit combination

MSB4N-1/4:J1M1D7A1-WP

Part number: 550492

FESTO

Consisting of filter/regulator, oiler, electrical on-off valve, pneumatic soft-start valve, wall mounting plate Maximum output pressure 9 bar, 40 µm filter, with pressure gauge, lockable regulator head, plastic bowl with plastic basket guard, manual condensate drain, flow direction from left to right.



Data sheet

| Feature | Value |
|---|--|
| Size | 4 |
| Series | MS |
| Actuator lock | Rotary knob with lock with accessories, lockable |
| Assembly position | Vertical +/- 5° |
| Grade of filtration | 40 µm |
| Condensate drain | manual rotary |
| Design structure | Branching module On/off valve Filter regulator with pressure gauge |
| Controller function | Output pressure constant with initial pressure compensation with secondary exhaust with return flow |
| Bowl guard | Plastic guard |
| Pressure gauge | with pressure gauge |
| Working pressure | 4.5 ... 10 bar |
| Pressure regulation range | 4 ... 9 bar |
| Standard nominal flow rate | 1,250 l/min |
| Characteristic coil data | 24 V DC: 1.8 W |
| Operating medium | Compressed air to ISO 8573-1:2010 [-:4:-] Inert gases |
| Note on operating and pilot medium | Lubricated operation possible (subsequently required for further operation) |
| Corrosion resistance classification CRC | 2 - Moderate corrosion stress |
| PWIS conformity | VDMA24364-B2-L |
| Storage temperature | -10 ... 60 °C |
| Food-safe | See Supplementary material information |
| Air purity class at output | Compressed air in accordance with ISO8573-1:2010 [7:4:-] |
| Medium temperature | -10 ... 50 °C |
| Ambient temperature | -10 ... 50 °C |
| Product weight | 1,800 g |
| Mounting type | with accessories |
| Pneumatic connection, port 1 | 1/4 NPT |
| Pneumatic connection, port 2 | 1/4 NPT |
| Pneumatic connection, port 3 | G1/4 |
| Material housing | Aluminum die cast |
| Material bowl | PC |