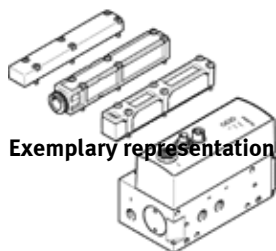


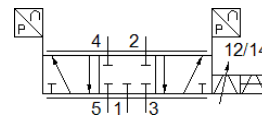
Proportional directional control valve VPWP-6-

Part number: 550171

FESTO



Exemplary representation



Data sheet

Overall data sheet – Individual values depend upon your configuration.

| Feature | Value |
|--|--|
| Nominal size | 6 mm |
| Type of actuation | electrical |
| Sealing principle | Hard |
| Assembly position | Any Preferably horizontal (display components upwards) If the valve is moved, it must be mounted at a right angle to the direction of movement |
| Design structure | Piston slide With built-in pressure sensors |
| Type of reset | Magnetic spring |
| Safety instructions | Safety position VPWP |
| Type of piloting | direct |
| Flow direction | non reversible |
| Valve function | 5/3 proportional directional control valve, closed |
| Status displays | LED yellow = PL (power load) LED green = power LED red = error |
| Operating pressure MPa | 0 ... 1 MPa |
| Working pressure | 0 ... 10 bar |
| Working pressure, positioning / soft stop | 4 ... 8 bar |
| Nominal operating pressure | 0.6 MPa |
| Nominal working pressure | 6 bar |
| Nominal operating pressure (psi) | 87 psi |
| Standard nominal flow rate | 700 l/min |
| Nominal operating voltage DC | 24 V |
| Operating voltage range DC | 18 ... 30 V |
| Load voltage range DC | 18 ... 30 V |
| Max. load current of the voltage output | 500 mA |
| Max. load current of the digital output | 500 mA |
| Max. current consumption of valve drive | 1.2 A |
| Max. current consumption, logic | 0.15 A |
| Nominal voltage DC | 24 V |
| Supply voltage of the digital output | 24 V load voltage |
| Supply voltage of the voltage output | 24 V load voltage |
| Authorization | RCM Mark |
| CE symbol (see declaration of conformity) | according to EU-EMV guideline according to EU-Ex protection guideline (ATEX) in accordance with EU RoHS directive |
| UKCA marking (see declaration of conformity) | To UK instructions for EMC To UK EX instructions To UK RoHS instructions |
| ATEX category Gas | II 3G |
| Explosion ignition protection type Gas | Ex nA IIC T5 X Gc |
| Explosion-proof ambient temperature | 0°C ≤ Ta ≤ +50°C |
| Operating medium | Compressed air in accordance with ISO8573-1:2010 [6:4:4] |

| Feature | Value |
|---|--|
| Note on operating and pilot medium | Lubricated operation not possible |
| Corrosion resistance classification CRC | 1 - Low corrosion stress |
| PWIS conformity | VDMA24364-B1/B2-L |
| Medium temperature | 0 ... 50 °C |
| Protection class | IP65 in assembled condition |
| Ambient temperature | 0 ... 50 °C |
| Product weight | 776 g |
| Resolution pressure | 0.01 bar |
| Linearity error, FS | < 1.5 % |
| FS repetition accuracy | < 1 % |
| Design of the 24 V voltage output | Positive logic (PNP) No electrical isolation Protected against short circuits Return supply without damage |
| Design of the digital output | Per IEC 61131-2 Positive logic (PNP) No electrical isolation Protected against short circuits Return supply without damage |
| Control interface | Digital CAN bus with Festo protocol Terminating resistor, integrated |
| Electrical connection, fieldbus interface IN | Plug M9 5-pin |
| Electrical connection, fieldbus interface OUT | Plug socket M9 5-pin |
| Fieldbus interface electrical connection | Plug socket M8 4-pin |
| Mounting type | with through hole with accessories |
| Color of connections | Connection 2: Blue Connection 4: Black |
| Pneumatic connection, port 1 | G1/8 |
| Pneumatic connection, port 2 | G1/8 |
| Pneumatic connection, port 3 | G1/8 |
| Pneumatic connection, port 4 | G1/8 |
| Pneumatic connection, port 5 | G1/8 |
| Materials note | Conforms to RoHS |
| Material cover | PA-reinforced |
| Material housing | Wrought Aluminum alloy Anodized |