

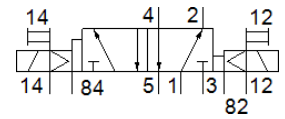
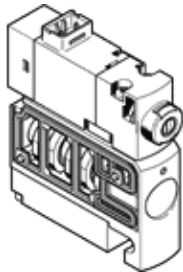
Solenoid valve

CPVSC1-M1LH-J-T-M5

Part number: 547307

FESTO

For valve manifold CPV-SC, M5 connection.
This type is suitable for vacuum.



Data sheet

Feature	Value
Valve function	5/2 bistable
Type of actuation	electrical
Valve size	10 mm
Standard nominal flow rate	170 l/min
Operating pressure MPa	-0.09 ... 0.7 MPa
Working pressure	-0.9 ... 7 bar
Design structure	Piston slide
Protection class	IP40
Exhaust-air function	not throttleable
Sealing principle	soft
Assembly position	Any
Manual override	detenting Pushing
Type of piloting	Piloted
Pilot air supply	external
Flow direction	non reversible
Lap	Positive overlap
Signal status display	LED
Pilot pressure MPa	0.3 ... 0.7 MPa
Pilot pressure	3 ... 7 bar
Switching time reversal	8 ms
Characteristic coil data	24 V DC: 1 W
Operating medium	Compressed air in accordance with ISO8573-1:2010 [7:4:4]
Note on operating and pilot medium	Lubricated operation possible (subsequently required for further operation)
Vibration resistance	Transport application test at severity level 2 in accordance with FN 942017-4 and EN 60068-2-6
Shock resistance	Shock test with severity level 2 in accordance with FN 942017-5 and EN 60068-2-27
Corrosion resistance classification CRC	1 - Low corrosion stress
PWIS conformity	VDMA24364-B2-L
Medium temperature	-5 ... 50 °C
Ambient temperature	-5 ... 50 °C
Product weight	56.5 g
Electrical connection	2-pin Plug
Mounting type	with through hole
Pilot exhaust port 82/84	Common line
Pneumatic connection, port 1	Common line
Pneumatic connection, port 2	M5
Pneumatic ports 3/5 combined	Common line
Pneumatic connection, port 4	M5
Materials note	Conforms to RoHS
Material seals	NBR
Material housing	Aluminum die cast