

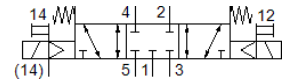
Solenoid valve

VSVA-B-P53C-ZH-A1-3AC1

Part number: 547246

FESTO

With square plug, shape C



Data sheet

Feature	Value
Valve function	5/3 closed
Type of actuation	electrical
Valve size	26 mm
Standard nominal flow rate	1,000 l/min
Operating pressure MPa	-0.09 ... 1.6 MPa
Working pressure	-0.9 ... 16 bar
Design structure	Piston slide
Type of reset	mechanical spring
CE symbol (see declaration of conformity)	according to EU low voltage guideline
UKCA marking (see declaration of conformity)	To UK instructions for EMC
Protection class	IP65 NEMA 4
Nominal size	9 mm
Exhaust-air function	throttleable
Sealing principle	soft
Assembly position	Any
Conforms to standard	ISO 15407-1 VDMA 24563
Manual override	Pushing
Type of piloting	Piloted
Pilot air supply	external
Flow direction	reversible
Lap	Positive overlap
Signal status display	LED
Pilot pressure MPa	0.3 ... 1 MPa
Pilot pressure	3 ... 10 bar
Flow rate of valve	1,400 l/min
Flow rate of valve on individual subbase	1,100 l/min
Flow rate of pneumatically linked valve	1,000 l/min
Switching time off	58 ms
Switching time on	23 ms
Switching time reversal	35 ms
Duty cycle	100 %
Characteristic coil data	230 V AC: 50/60 Hz, pick-up power 2.9 VA, holding power 2.1 VA
Permissible voltage fluctuation	-15 % / +10 %
Operating medium	Compressed air in accordance with ISO8573-1:2010 [7:4:4]
Note on operating and pilot medium	Lubricated operation possible (subsequently required for further operation)
Vibration resistance	Transport application test at severity level 2 in accordance with FN 942017-4 and EN 60068-2-6
Shock resistance	Shock test with severity level 2 in accordance with FN 942017-5 and EN 60068-2-27
Corrosion resistance classification CRC	0 - No corrosion stress
PWIS conformity	VDMA24364-B1/B2-L

Feature	Value
Medium temperature	-5 ... 50 °C
Relative air humidity	0 - 90 %
Sound pressure level	85 dB(A)
Pilot medium	Compressed air in accordance with ISO8573-1:2010 [7:4:4]
Ambient temperature	-5 ... 50 °C
Max. tightening torque, valve mounting	2 Nm
Product weight	305 g
Electrical connection	Plug pattern type C to EN 175301-803 With mains earth Per DIN EN 175301-803
Mounting type	On subbase
Auxiliary pilot air port 12	Connection plate size 26 mm, according to ISO 15407-1
Auxiliary pilot air port 14	Connection plate size 26 mm, according to ISO 15407-1
Pilot exhaust port 82/84	Not ducted as per standard Ducted
Pneumatic connection, port 1	Connection plate size 26 mm, according to ISO 15407-1
Pneumatic connection, port 2	Connection plate size 26 mm, according to ISO 15407-1
Pneumatic connection, port 3	Connection plate size 26 mm, according to ISO 15407-1
Pneumatic connection, port 4	Connection plate size 26 mm, according to ISO 15407-1
Pneumatic connection, port 5	Connection plate size 26 mm, according to ISO 15407-1
Pilot interface	According to ISO 15218
Materials note	Conforms to RoHS
Material seals	HNBR NBR
Material housing	Aluminum die cast
Material screws	Steel Galvanized