

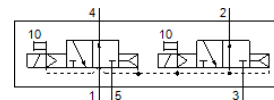
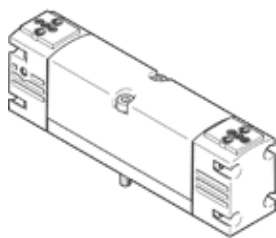
Basic valve

VSVA-B-T32U-A-A1-P1

Part number: 546733

FESTO

Width 26 mm



Data sheet

| Feature | Value |
|--|--|
| Valve function | 2x3/2 open, monostable |
| Type of actuation | electrical |
| Valve size | 26 mm |
| Standard nominal flow rate | 900 l/min |
| Operating pressure MPa | 0.2 ... 1 MPa |
| Working pressure | 2 ... 10 bar |
| Design structure | Piston slide |
| Type of reset | Air spring |
| Authorization | c UL us - Recognized (OL) |
| Protection class | IP65 NEMA 4 |
| Nominal size | 9 mm |
| Exhaust-air function | throttleable |
| Sealing principle | soft |
| Assembly position | Any |
| Conforms to standard | ISO 15407-1 VDMA 24563 |
| Type of piloting | Piloted |
| Pilot air supply | Internal |
| Flow direction | non reversible |
| Lap | Positive overlap |
| Signal status display | LED |
| Pilot pressure MPa | 0.3 ... 1 MPa |
| Pilot pressure | 3 ... 10 bar |
| Flow rate of valve | 1,250 l/min |
| Flow rate of valve on individual subbase | 1,000 l/min |
| Flow rate of pneumatically linked valve | 900 l/min |
| Operating medium | Compressed air in accordance with ISO8573-1:2010 [7:4:4] |
| Note on operating and pilot medium | Lubricated operation possible (subsequently required for further operation) |
| Vibration resistance | Transport application test at severity level 2 in accordance with FN 942017-4 and EN 60068-2-6 |
| Shock resistance | Shock test with severity level 2 in accordance with FN 942017-5 and EN 60068-2-27 |
| Corrosion resistance classification CRC | 0 - No corrosion stress |
| PWIS conformity | VDMA24364-B1/B2-L |
| Medium temperature | -5 ... 50 °C |
| Relative air humidity | 0 - 90 % |
| Sound pressure level | 85 dB(A) |
| Pilot medium | Compressed air in accordance with ISO8573-1:2010 [7:4:4] |
| Ambient temperature | -5 ... 50 °C |
| Max. tightening torque, valve mounting | 1.8 ... 2.2 Nm |
| Product weight | 229 g |
| Mounting type | On subbase |

| Feature | Value |
|------------------------------|---|
| Auxiliary pilot air port 12 | Connection plate size 26 mm, according to ISO 15407-1 |
| Auxiliary pilot air port 14 | Connection plate size 26 mm, according to ISO 15407-1 |
| Pilot exhaust port 82/84 | Not ducted as per standard Ducted |
| Pneumatic connection, port 1 | Connection plate size 26 mm, according to ISO 15407-1 |
| Pneumatic connection, port 2 | Connection plate size 26 mm, according to ISO 15407-1 |
| Pneumatic connection, port 3 | Connection plate size 26 mm, according to ISO 15407-1 |
| Pneumatic connection, port 4 | Connection plate size 26 mm, according to ISO 15407-1 |
| Pneumatic connection, port 5 | Connection plate size 26 mm, according to ISO 15407-1 |
| Pilot interface | According to ISO 15218 |
| Materials note | Conforms to RoHS |
| Material seals | HNBR NBR |
| Material housing | Aluminum die cast |
| Material screws | Steel Galvanized |