

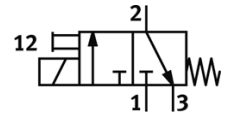
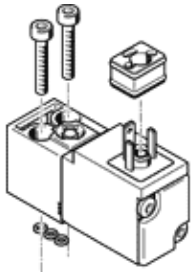
Solenoid valve

VSCS-B-M32-MT-WA-2AC1

Part number: 546263

FESTO

With square plug connection, design C
This type is suitable for vacuum.



Data sheet

Feature	Value
Valve function	3/2 closed, monostable
Type of actuation	electrical
Width	17 mm
Standard nominal flow rate	18 l/min
Working pressure	-0.9 ... 10 bar
Type of reset	mechanical spring
Protection class	IP65
Based on the standard	ISO 15218
Sealing principle	soft
Assembly position	Any
Conforms to standard	ISO 15218
Manual override	with accessories, detenting Pushing
Type of piloting	direct
Flow direction	non reversible
Freedom from overlap	No
Switching time off	16 ms
Switching time on	10 ms
Duty cycle	100%
Characteristic coil data	110 V AC: 50 Hz, switching power: 3 VA, holding capacity: 2.4 VA 120 V AC: 60 Hz, switching power: 3 VA, holding capacity: 2.4 VA
Permissible voltage fluctuation	At 50 Hz $\pm 10\%$ At 60 Hz: -17.5 to +10%
Operating medium	Compressed air in accordance with ISO8573-1:2010 [7:4:4]
Note on operating and pilot medium	Lubricated operation possible (subsequently required for further operation)
Corrosion resistance classification CRC	2
Medium temperature	-10 ... 50 °C
Ambient temperature	-10 ... 50 °C
Electrical connection	Per DIN EN 175301-803 Design C
Pneumatic connection, port 1	Subbase
Pneumatic connection, port 2	Subbase
Pneumatic connection, port 3	Subbase
Materials note	Conforms to RoHS
Materials information for seals	NBR