

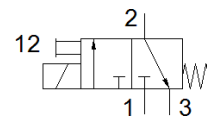
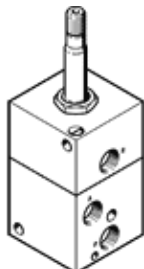
Solenoid valve

MCHB-3-1/4-B

Part number: 546056
Product to be discontinued

FESTO

Type to be discontinued. Available until 2018. See Support Portal for alternative products.



Data sheet

Feature	Value
Valve function	3/2 closed, monostable
Type of actuation	electrical
Width	50 mm
Standard nominal flow rate	600 l/min
Working pressure	0 ... 7 bar
Design structure	Poppet seat
Type of reset	mechanical spring
Protection class	IP65
Nominal size	6.5 mm
Sealing principle	soft
Assembly position	Any
Manual override	detenting
Type of piloting	direct
Flow direction	non reversible
Switching time off	27 ms
Switching time on	20 ms
Operating medium	Compressed air in accordance with ISO8573-1:2010 [7:::]
Note on operating and pilot medium	Lubricated operation possible (subsequently required for further operation)
Corrosion resistance classification CRC	2 - Moderate corrosion stress
Medium temperature	-10 ... 60 °C
Ambient temperature	-5 ... 40 °C
Product weight	340 g
Electrical connection	Plug
Mounting type	with through hole
Pneumatic connection, port 1	G1/8
Pneumatic connection, port 2	G1/8
Pneumatic connection, port 3	G1/8
Materials information for seals	NBR
Materials information, housing	Aluminum Anodized