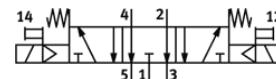
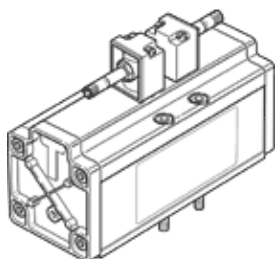


Solenoid valve

MFH-5/3E-D4

Part number: 546037

FESTO



Data sheet

Feature	Value
Valve function	5/3 exhausted
Type of actuation	electrical
Width	76 mm
Standard nominal flow rate	4,800 l/min
Working pressure	3 ... 16 bar
Design structure	Piston slide
Type of reset	mechanical spring
Protection class	IP65
Nominal size	18 mm
Grid dimension	82 mm
Exhaust-air function	throttleable
Sealing principle	soft
Assembly position	Any
Conforms to standard	ISO 5599-1
Manual override	with accessories, detenting
Type of piloting	Piloted
Pilot air supply	Internal
Flow direction	non reversible
Switching time off	290 ms
Switching time on	85 ms
Operating medium	Filtered compressed air, grade of filtration 40 µm, lubricated or unlubricated
Note on operating and pilot medium	Lubricated operation possible (subsequently required for further operation)
Corrosion resistance classification CRC	2 - Moderate corrosion stress
PWIS conformity	VDMA24364-B2-L
Medium temperature	-10 ... 60 °C
Ambient temperature	-10 ... 50 °C
Product weight	2,500 g
Electrical connection	Via F coil, must be ordered separately
Mounting type	with through hole
Pilot exhaust port 82	Non-ducted
Pilot exhaust port 84	Non-ducted
Pneumatic connection, port 1	Connection plate size 4 as per ISO 5599-1
Pneumatic connection, port 2	Connection plate size 4 as per ISO 5599-1
Pneumatic connection, port 3	Connection plate size 4 as per ISO 5599-1
Pneumatic connection, port 4	Connection plate size 4 as per ISO 5599-1
Pneumatic connection, port 5	Connection plate size 4 as per ISO 5599-1
Material seals	NBR
Material housing	Aluminum