

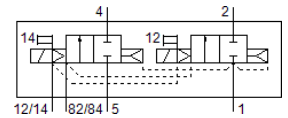
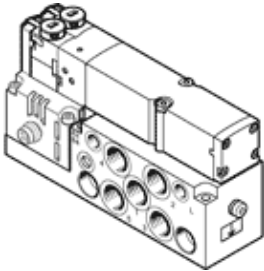
Solenoid valve

VMPA2-M1H-I-G1/8-PI

Part number: 545232

FESTO

For valve manifold MPA-S.



Data sheet

| Feature | Value |
|--|--|
| Valve function | 2x2/2 closed, monostable |
| Type of actuation | electrical |
| Valve size | 20 mm |
| Standard nominal flow rate | 650 l/min |
| Operating pressure MPa | 0.3 ... 0.8 MPa |
| Working pressure | 3 ... 8 bar |
| Design structure | Piston slide |
| Type of reset | Air spring |
| Authorization | c UL us - Recognized (OL) |
| CE symbol (see declaration of conformity) | according to EU-EMV guideline in accordance with EU RoHS directive |
| UKCA marking (see declaration of conformity) | To UK instructions for EMC To UK RoHS instructions |
| Protection class | IP65 to IEC 60529 |
| Exhaust-air function | throttleable |
| Sealing principle | soft |
| Assembly position | Any |
| Manual override | detenting Pushing |
| Type of piloting | Piloted |
| Pilot air supply | Internal |
| Flow direction | non reversible |
| Lap | Positive overlap |
| Signal status display | Yes |
| Pilot pressure MPa | 0.3 ... 0.8 MPa |
| Pilot pressure | 3 ... 8 bar |
| Suitability for vacuum | No |
| Standard nominal flow rate with QS-8 | 650 l/min |
| Switching time off | 25 ms |
| Switching time on | 7 ms |
| Max. positive test pulse with logic 0 | 400 µs |
| Max. negative test pulse with logic 1 | 900 µs |
| Permissible voltage fluctuation | +/- 25 % |
| Operating medium | Compressed air in accordance with ISO8573-1:2010 [7:4:4] |
| Note on operating and pilot medium | Lubricated operation possible (subsequently required for further operation) |
| Vibration resistance | Transport application test at severity level 2 in accordance with FN 942017-4 and EN 60068-2-6 |
| Shock resistance | Shock test with severity level 2 in accordance with FN 942017-5 and EN 60068-2-27 |
| Corrosion resistance classification CRC | 1 - Low corrosion stress |
| PWIS conformity | VDMA24364-B1/B2-L |
| Storage temperature | -20 ... 40 °C |

| Feature | Value |
|--|--|
| Medium temperature | -5 ... 50 °C |
| Relative air humidity | Max. 90% at 40°C |
| Ambient temperature | -5 ... 50 °C |
| Max. tightening torque, valve mounting | 0.65 Nm |
| Product weight | 325 g |
| Electrical connection | 4-pin M8x1 Plug to EN 60947-5-2 |
| Mounting type | with through hole |
| Pneumatic connection, port 1 | G1/8 |
| Pneumatic connection, port 2 | G1/8 |
| Pneumatic connection, port 3 | G1/8 |
| Pneumatic connection, port 4 | G1/8 |
| Pneumatic connection, port 5 | G1/8 |
| Materials note | Conforms to RoHS |
| Material seals | NBR |
| Material housing | Aluminum die cast |