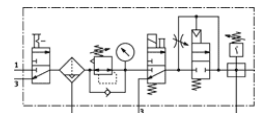
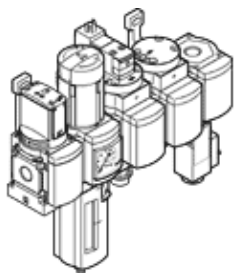


Service unit combination MSB6-1/2:C3J2D7A1F3-WP

Part number: 542637

FESTO

Comprising on-off valve, filter regulator, electrical on-off valve, pneumatic soft-start valve, branching module with pressure switch but without display, wall mounting plate. Maximum output pressure 9 bar, 40 µm filter, with pressure gauge, lockable regulator head, plastic bowl with plastic bowl guard, fully automatic condensate drain, flow direction from left to right.



Data sheet

| Feature | Value |
|-----------------------------------------|---------------------------------------------------------------------------------------------------------------|
| Size | 6 |
| Series | MS |
| Actuator lock | Rotary knob with lock with accessories, lockable |
| Assembly position | Vertical +/- 5° |
| Grade of filtration | 40 µm |
| Condensate drain | fully automatic |
| Design structure | Branching module Start-up valve Pressure sensor On/off valve Filter regulator with pressure gauge |
| Controller function | Output pressure constant with initial pressure compensation with secondary exhaust with return flow |
| Bowl guard | Plastic guard |
| Pressure gauge | with pressure gauge |
| Working pressure | 4.5 ... 10 bar |
| Pressure control range | 4 ... 9 bar |
| Standard nominal flow rate | 3,100 l/min |
| Characteristic coil data | 24V DC: 2,5W |
| Operating medium | Compressed air in accordance with ISO8573-1:2010 [7:4:4] Inert gases |
| Note on operating and pilot medium | Lubricated operation possible (subsequently required for further operation) |
| Corrosion resistance classification CRC | 2 |
| Storage temperature | -10 ... 60 °C |
| Air purity class at output | Compressed air in accordance with ISO8573-1:2010 [7:4:4] |
| Medium temperature | 5 ... 50 °C |
| Ambient temperature | 5 ... 50 °C |
| Product weight | 3,500 g |
| Mounting type | with accessories |
| Pneumatic connection, port 1 | G1/2 |
| Pneumatic connection, port 2 | G1/2 |
| Pneumatic connection, port 3 | G1/2 |
| Materials information, housing | Aluminum die cast |
| Materials information for bowl | PC |