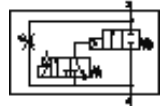
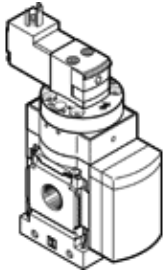


# Pressure build-up valve MS6N-DE-3/8-10V24-Z

Part number: 542577

FESTO

To slowly pressurize and exhaust pneumatic systems, flow direction from right to left



## Data sheet

Feature	Value
Type of actuation	electrical
Assembly position	Any
Manual override	detenting Pushing
Design structure	Piston seat
Type of reset	mechanical spring
Type of piloting	Piloted
Pilot air supply	Internal
Flow direction	non reversible
Valve function	2/2
Switching position indicator	with accessories
Working pressure	4 ... 10 bar
b value	0.48
C value	21.05 l/sbar
Standard nominal flow rate	5,050 l/min
Duty cycle	100 %
Characteristic coil data	24 V DC: 1.8 W
Authorization	c UL - Recognized (OL)
Operating medium	Compressed air in accordance with ISO8573-1:2010 [7:4:4] Inert gases
Note on operating and pilot medium	Lubricated operation possible (subsequently required for further operation)
Corrosion resistance classification CRC	2 - Moderate corrosion stress
PWIS conformity	VDMA24364-B2-L
Food-safe	See Supplementary material information
Medium temperature	-10 ... 50 °C
Protection class	IP65
Ambient temperature	-10 ... 50 °C
Product weight	680 g
Electrical connection	Plug pattern type C to EN 175301-803 Plug Per DIN EN 175301-803 Cubic design
Signal status display	with accessories
Mounting type	Line installation with accessories Optional
Pneumatic connection, port 1	3/8 NPT
Pneumatic connection, port 2	3/8 NPT
Materials note	Conforms to RoHS
Material seals	NBR
Material housing	Aluminum die cast