

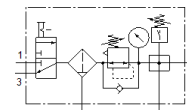
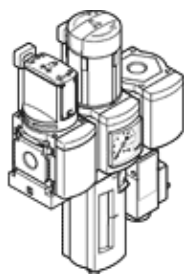
# Service unit combination

## MSB6-1/2:C3J1F3-WP

Part number: 542270

FESTO

Consisting of manual on-off valve, filter regulator, branching module including pressure switch without indicator and wall mounting plate. 12 bar maximum output pressure, 40 µm filter, with pressure gauge, lockable regulator head, plastic bowl with plastic bowl guard, manual condensate drain, direction of flow: from left to right.



## Data sheet

| Feature                                 | Value  |
|---|--|
| Size                                    | 6  |
| Series                                  | MS   |
| Actuator lock                           | Rotary knob with lock<br>with accessories, lockable  |
| Assembly position                       | Vertical +/- 5°  |
| Grade of filtration                     | 40 µm  |
| Condensate drain                        | manual rotary  |
| Design structure                        | Branching module<br>On/off valve<br>Filter regulator with pressure gauge                                     |
| Controller function                     | Output pressure constant<br>with initial pressure compensation<br>with secondary exhaust<br>with return flow |
| Bowl guard                              | Plastic guard  |
| Pressure gauge                          | with pressure gauge  |
| Working pressure                        | 0.8 ... 18 bar   |
| Pressure regulation range               | 0.5 ... 12 bar   |
| Standard nominal flow rate              | 4,500 l/min  |
| Operating medium                        | Compressed air in accordance with ISO8573-1:2010 [7:4:4]<br>Inert gases                                      |
| Note on operating and pilot medium      | Lubricated operation possible (subsequently required for further operation)                                  |
| Corrosion resistance classification CRC | 2 - Moderate corrosion stress  |
| PWIS conformity                         | VDMA24364-B1/B2-L  |
| Storage temperature                     | -10 ... 60 °C  |
| Food-safe                               | See Supplementary material information   |
| Air purity class at output              | Compressed air in accordance with ISO8573-1:2010 [7:4:4]   |
| Medium temperature                      | -10 ... 60 °C  |
| Ambient temperature                     | -10 ... 60 °C  |
| Product weight                          | 2,000 g  |
| Mounting type                           | with accessories   |
| Pneumatic connection, port 1            | G1/2   |
| Pneumatic connection, port 2            | G1/2   |
| Pneumatic connection, port 3            | G1/2   |
| Materials note                          | Conforms to RoHS   |
| Material housing                        | Aluminum die cast  |
| Material bowl                           | PC   |