

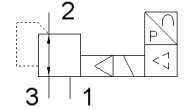
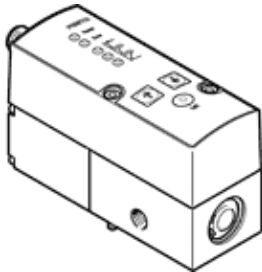
Proportional pressure regulator VPPM-6L-L-1-N18-0L6H-V1N-S1

Part number: 542206

FESTO

with electric set point specification and two-stage control circuit for stable, precise characteristic of regulation.

This product is only available if ordered from the Festo Corporation, USA.



Data sheet

| Feature | Value |
|---|--|
| Nominal diameter, pressurization | 6 mm |
| Nominal diameter, exhaust | 4.5 mm |
| Type of actuation | electrical |
| Sealing principle | soft |
| Assembly position | Any |
| Design structure | Pilot actuated diaphragm regulator |
| Short circuit strength | for all electrical connections |
| Safety instructions | VPPM safety position: If the power supply cable is interrupted, output pressure is maintained unregulated. |
| Polarity protected | for all electrical connections |
| Type of reset | mechanical spring |
| Type of piloting | Piloted |
| Valve function | 3-way proportional-pressure regulator |
| Type of display | LED |
| Pressure control range | 0.06 ... 6 bar |
| Inlet pressure 1 | 0 ... 8 bar |
| Max. pressure hysteresis | 0.03 bar |
| Standard nominal flow rate | 900 l/min |
| Operating voltage range DC | 21.6 ... 26.4 V |
| Duty cycle | 100% |
| Max. electrical power consumption | 7 W |
| Residual ripple | 10 % |
| Switch output | NPN |
| Signal range, analog output | 0 - 10 V |
| Signal range, analog input | 0 - 10 V |
| Operating medium | Compressed air in accordance with ISO8573-1:2010 [7:4:4] Inert gases |
| Note on operating and pilot medium | Lubricated operation not possible |
| CE symbol (see declaration of conformity) | according to EU-EMV guideline |
| Corrosion resistance classification CRC | 2 |
| Medium temperature | 10 ... 50 °C |
| Protection class | IP65 |
| Ambient temperature | 0 ... 60 °C |
| Authorization | C-Tick c UL us - Recognized (OL) |
| Product weight | 400 g |
| Linearity error, FS | 1 % |
| Temperature coefficient | 0.04 %/K |
| FS repetition accuracy | 0.5 % |
| Electrical connection | Plug M12 8-pin |

| Feature | Value |
|--------------------------------|---|
| Mounting type | Optional with through hole with accessories |
| Pneumatic connection, port 1 | NPT1/8-27 |
| Pneumatic connection, port 2 | NPT1/8-27 |
| Pneumatic connection, port 3 | NPT1/8-27 |
| Materials note | Conforms to RoHS |
| Materials information, housing | Wrought Aluminum alloy |