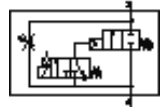
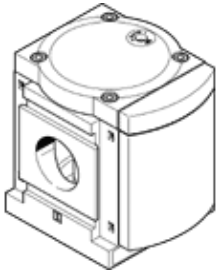


Pressure build-up valve MS12-DE-G-V24

Part number: 541498

FESTO

To slowly pressurize and exhaust pneumatic equipment



Data sheet

| Feature | Value |
|---|---|
| Exhaust-air function | throttleable |
| Type of actuation | electrical |
| Assembly position | Any |
| Manual override | detenting Pushing |
| Design structure | Piston seat |
| Type of reset | mechanical spring |
| Type of piloting | Piloted |
| Pilot air supply | Internal |
| Flow direction | non reversible |
| Valve function | 2/2 |
| Switching position indicator | with accessories |
| Working pressure | 3 ... 16 bar |
| Standard nominal flow rate | 25,000 ... 42,000 l/min |
| Duty cycle | 100 % |
| Characteristic coil data | 24 V DC: 8.4 W 42 V AC: 50 Hz, pick-up power 14.0 VA, holding power 10.0 VA 42 V AC: 60 Hz, pick-up power 12.0 VA, holding power 7.0 VA |
| Operating medium | Compressed air in accordance with ISO8573-1:2010 [-:~:] |
| Corrosion resistance classification CRC | 2 - Moderate corrosion stress |
| PWIS conformity | VDMA24364-B1/B2-L |
| Medium temperature | -10 ... 50 °C |
| Protection class | IP65 |
| Ambient temperature | -10 ... 50 °C |
| Product weight | 3,800 g |
| Electrical connection | Per DIN EN 175301-803 Cubic design |
| Signal status display | with accessories |
| Mounting type | Line installation with accessories Optional |
| Pneumatic connection, port 1 | Manifold module |
| Pneumatic connection, port 2 | Manifold module |
| Material seals | NBR |
| Material housing | Aluminum die cast |