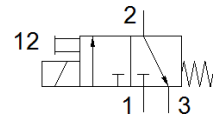
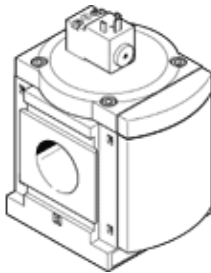


# start valve MS12-EE-G-V24

Part number: 541496

FESTO

Electrical for pressurizing and exhausting pneumatic equipment.



## Data sheet

Feature	Value
Design structure	Piston slide
Type of actuation	electrical
Exhaust-air function	not throttleable
Manual override	detenting Pushing
Type of reset	mechanical spring
Type of piloting	Piloted
Valve function	3/2 closed, monostable
Working pressure	3 ... 16 bar
Standard nominal flow rate	25,000 ... 32,000 l/min
Duty cycle	100 %
Characteristic coil data	24 V DC: 4.5 W
Permissible voltage fluctuation	+/- 10 %
Operating medium	Compressed air in accordance with ISO8573-1:2010 [7:4:4] Inert gases
Note on operating and pilot medium	Lubricated operation possible (subsequently required for further operation)
Corrosion resistance classification CRC	2 - Moderate corrosion stress
PWIS conformity	VDMA24364-B1/B2-L
Medium temperature	-10 ... 50 °C
Protection class	IP65
Ambient temperature	-10 ... 50 °C
Mounting type	Line installation with accessories Optional
Assembly position	Any
Flow direction	non reversible
Product weight	3,800 g
Pneumatic connection, port 1	Manifold module
Pneumatic connection, port 2	Manifold module
Pneumatic connection, port 3	G1
Pilot air supply	Internal
Electrical connection	Per DIN EN 175301-803 Cubic design
Material seals	NBR
Material housing	Aluminum die cast