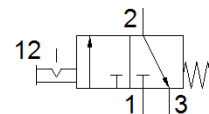
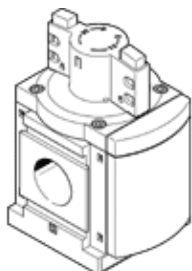


start valve MS12-EM-G

Part number: 541495

FESTO

Manual for pressurizing and exhausting pneumatic equipment



Data sheet

| Feature | Value |
|---|--|
| Design structure | Piston slide |
| Type of actuation | manual |
| Exhaust-air function | not throttleable |
| Type of piloting | direct |
| Valve function | 3/2 bistable |
| Working pressure | 0 ... 20 bar |
| Standard nominal flow rate | 25,000 ... 32,000 l/min |
| Operating medium | Compressed air in accordance with ISO8573-1:2010 [-:-:-] |
| Corrosion resistance classification CRC | 2 - Moderate corrosion stress |
| PWIS conformity | VDMA24364-B1/B2-L |
| Medium temperature | -10 ... 60 °C |
| Ambient temperature | -10 ... 60 °C |
| Mounting type | Line installation with accessories Optional |
| Assembly position | Any |
| Flow direction | non reversible |
| Product weight | 3,900 g |
| Pneumatic connection, port 1 | Manifold module |
| Pneumatic connection, port 2 | Manifold module |
| Pneumatic connection, port 3 | G1 |
| Pilot air supply | Internal |
| Material seals | NBR |
| Material housing | Aluminum die cast |