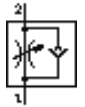
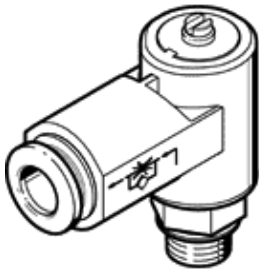


One-way flow control valve GRLA-1/8-QS-8-B-20

Part number: 540359

FESTO

For exhaust air flow control, with swivel joint.



Data sheet

Feature	Value
Valve function	One-way flow control function for exhaust air
Pneumatic connection, port 1	QS-8
Pneumatic connection, port 2	G1/8
Type of actuation	manual
Adjusting element	Slotted head screw
Mounting type	Threaded
Standard nominal flow rate in flow control direction	650 l/min
Standard nominal flow rate in non-return direction	600 ... 750 l/min
Working pressure	0.2 ... 10 bar
Ambient temperature	-10 ... 60 °C
Operating medium	Filtered, unlubricated compressed air, 40 µm filtration Filtered, lubricated compressed air, 40 µm filtration
Assembly position	Any
Standard flow rate in direction of flow control: 6 -> 0 bar	1,080 l/min
Standard flow rate in blocked direction: 6 -> 0 bar	800 ... 1250 l/min
Storage temperature	-10 ... 40 °C
Medium temperature	-10 ... 60 °C
Max. tightening torque	4 Nm
Permissible actuation moment, regulating screw	0.4 Nm
Product weight	18 g
Container size	20
Materials information for screw-in stud	Wrought Aluminum alloy
Materials note	Conforms to RoHS
Materials information for seals	NBR TPE-U(PU)
Release ring material data	POM
Regulating screw material data	Brass
Swivel joint material data	PBT-reinforced