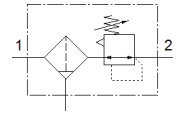
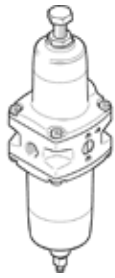


Filter regulator PCRP-64-G14-12-C-R1-M-T19

Part number: 5394670

FESTO



Data sheet

| Feature | Value |
|------------------------------------|---|
| Size | 64 |
| Series | P |
| Actuator lock | Adjusting screw with lock |
| Assembly position | Vertical +/- 5° |
| Grade of filtration | 5 µm |
| Condensate drain | manual rotary |
| Design structure | Filter regulator without pressure gauge |
| Conforms to standard | NACE MR0175/ISO 15156 (housing and bowl) |
| Max. condensate volume | 30 cm ³ |
| Controller function | with initial pressure compensation with secondary exhaust |
| Pressure gauge | Prepared for G1/4 |
| Operating pressure MPa | 0.1 ... 2 MPa |
| Working pressure | 1 ... 20 bar |
| Pressure regulation range | 0.5 ... 12 bar |
| Max. pressure hysteresis | 0.2 bar |
| Max. standard flow rate | 2,400 l/min |
| Standard nominal flow rate | 1,920 l/min |
| Operating medium | Compressed air to ISO 8573-1:2010 [-:4:-] Inert gases |
| Note on operating and pilot medium | Lubricated operation possible (subsequently required for further operation) |
| PWIS conformity | VDMA24364 zone III |
| Storage temperature | -60 ... 80 °C |
| Air purity class at output | Compressed air in accordance with ISO8573-1:2010 [6:4:4] |
| Medium temperature | -60 ... 80 °C |
| Ambient temperature | -60 ... 80 °C |
| Product weight | 1,965 g |
| Mounting type | Line installation With mounting kit Optional |
| Pressure gauge connection | G1/4 |
| Pneumatic connection, port 1 | G1/4 |
| Pneumatic connection, port 2 | G1/4 |
| Material of drain screw | High alloy steel, non-corrosive |
| Material number of drain screw | 1.4404/316L |
| Material of filter holder | Stainless steel casting |
| Material number of filter support | 1.4409/CF3M(316L) |
| Materials note | Conforms to RoHS |
| Material mounting bracket | High alloy steel, non-corrosive |
| Material seals | CR NBR VMQ |
| Material spring | High alloy steel, non-corrosive |
| Material filter | High alloy steel, non-corrosive |
| Material number of filter | 1.4404/316L |

| Feature | Value |
|-----------------------------|---------------------------------|
| Material housing | Stainless steel casting |
| Material number for housing | 1.4409/CF3M(316L) |
| Material adjusting screw | High alloy steel, non-corrosive |
| Material bowl | Stainless steel casting |
| Material number of bowl | 1.4409/CF3M (316L) |