

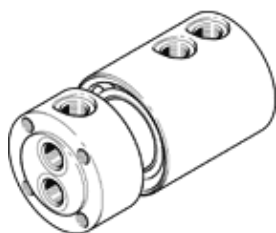
# Rotary distributor

## GF-1/8-2

Part number: 539287

FESTO

Multiple rotary distributor, 2 separate inputs and outputs.



## Data sheet

Feature	Value
Nominal size	6 mm
Assembly position	Any
Operating pressure for entire temperature range	-0.095 ... 1 MPa
Operating pressure complete temperature range	-0.95 ... 10 bar
Operating pressure for entire temperature range	-13.775 ... 145 psi
Standard nominal flow rate 1.1-2.1	720 l/min
Standard nominal flow rate 1.2-2.2	1,050 l/min
Max. speed	300 1/min
Operating medium	Compressed air in accordance with ISO8573-1:2010 [7:-:-] Water (liquid, free of ice)
Note on operating and pilot medium	Use 5 µm filter when operating with water Lubricated operation possible
Corrosion resistance classification CRC	1 - Low corrosion stress
PWIS conformity	VDMA24364-B1/B2-L
Ambient temperature	-10 ... 80 °C
Pneumatic connection, port 1	G1/8
Pneumatic connection, port 2	G1/8
Materials note	Conforms to RoHS