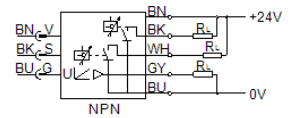
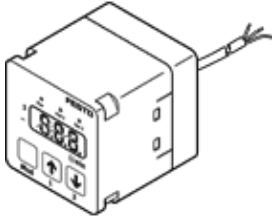


# Flow sensor SFEV-F500-L-2NB-K1

Part number: 538549

FESTO

Separate display for SFET-F and SFET-R flow rate transducers



## Data sheet

Feature	Value
Authorization	RCM Mark
CE symbol (see declaration of conformity)	according to EU-EMV guideline
Materials note	Contains PWIS substances
Ambient temperature	0 ... 50 °C
Switch output	2xNPN
Switching function	Window comparator Threshold value comparator
Switching element function	Normally closed contact Normally open contact
Analog output	1 - 5 V
Load resistance	50 kOhm
Indicating range	5 ... 50 l/min
Operating voltage range DC	12 ... 24 V
Electrical connection	Cable
Cable length	1 m
Materials information, cable sheaths	PVC
Mounting type	With mounting bracket
Product weight	70 g
Materials information, housing	PA
Type of display	31-place alphanumeric
Protection class	IP40
Corrosion resistance classification CRC	2 - Moderate corrosion stress