

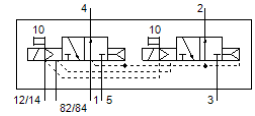
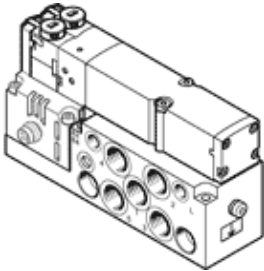
# Solenoid valve

## VMPA2-M1H-N-S-G1/8-PI

Part number: 537978

FESTO

For valve manifold MPA-S.



## Data sheet

| Feature                                      | Value  |
|--|--|
| Valve function                               | 2x3/2 open, monostable   |
| Type of actuation                            | electrical   |
| Valve size                                   | 20 mm  |
| Standard nominal flow rate                   | 550 l/min  |
| Operating pressure MPa                       | 0.3 ... 1 MPa  |
| Working pressure                             | 3 ... 10 bar   |
| Design structure                             | Piston slide   |
| Type of reset                                | Air spring   |
| Authorization                                | c UL us - Recognized (OL)  |
| CE symbol (see declaration of conformity)    | according to EU-EMV guideline<br>in accordance with EU RoHS directive                          |
| UKCA marking (see declaration of conformity) | To UK instructions for EMC<br>To UK RoHS instructions  |
| Protection class                             | IP65<br>in assembled condition<br>to IEC 60529   |
| Exhaust-air function                         | throttleable   |
| Sealing principle                            | soft   |
| Assembly position                            | Any  |
| Manual override                              | detenting<br>Pushing   |
| Type of piloting                             | Piloted  |
| Pilot air supply                             | external   |
| Flow direction                               | non reversible   |
| Lap  | Positive overlap   |
| Signal status display                        | Yes  |
| Pilot pressure MPa                           | 0.3 ... 0.8 MPa  |
| Pilot pressure                               | 3 ... 8 bar  |
| Suitability for vacuum                       | No   |
| Standard nominal flow rate with QS-8         | 550 l/min  |
| Switching time off                           | 28 ms  |
| Switching time on                            | 8 ms   |
| Max. positive test pulse with logic 0        | 400 µs   |
| Max. negative test pulse with logic 1        | 900 µs   |
| Permissible voltage fluctuation              | +/- 25 %   |
| Operating medium                             | Compressed air in accordance with ISO8573-1:2010 [7:4:4]                                       |
| Note on operating and pilot medium           | Lubricated operation possible (subsequently required for further operation)                    |
| Vibration resistance                         | Transport application test at severity level 2 in accordance with FN 942017-4 and EN 60068-2-6 |
| Shock resistance                             | Shock test with severity level 2 in accordance with FN 942017-5 and EN 60068-2-27              |
| Corrosion resistance classification CRC      | 1 - Low corrosion stress   |
| PWIS conformity                              | VDMA24364-B1/B2-L  |

| Feature                                | Value                                    |
|--|--|
| Storage temperature                    | -20 ... 40 °C                            |
| Medium temperature                     | -5 ... 50 °C                             |
| Relative air humidity                  | Max. 90% at 40°C                         |
| Ambient temperature                    | -5 ... 50 °C                             |
| Max. tightening torque, valve mounting | 0.65 Nm                                  |
| Product weight                         | 325 g                                    |
| Electrical connection                  | 4-pin<br>M8x1<br>Plug<br>to EN 60947-5-2 |
| Mounting type                          | with through hole                        |
| Auxiliary pilot air port 12/14         | M5                                       |
| Pilot exhaust port 82/84               | M5                                       |
| Pneumatic connection, port 1           | G1/8                                     |
| Pneumatic connection, port 2           | G1/8                                     |
| Pneumatic connection, port 3           | G1/8                                     |
| Pneumatic connection, port 4           | G1/8                                     |
| Pneumatic connection, port 5           | G1/8                                     |
| Materials note                         | Conforms to RoHS                         |
| Material seals                         | NBR                                      |
| Material housing                       | Aluminum die cast                        |