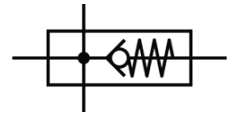
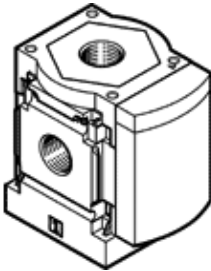


Branching module MS4-FRM-1/8-I-Z

Part number: 536970

FESTO

With integrated non-return function, direction of flow: from right to left



Data sheet

Feature	Value
Assembly position	Any
Design structure	Branching module With non-return function
Working pressure	0 ... 10 bar
Standard nominal flow rate in main flow direction 1->2	1,200 l/min
Standard nominal flow rate outlet at top	500 l/min
Standard nominal flow rate outlet at bottom	500 l/min
Operating medium	Compressed air in accordance with ISO8573-1:2010 [7:4:4] Inert gases
Note on operating and pilot medium	Lubricated operation possible (subsequently required for further operation)
Corrosion resistance classification CRC	2
Storage temperature	-10 ... 60 °C
Medium temperature	-10 ... 60 °C
Ambient temperature	-10 ... 60 °C
Product weight	160 g
Pneumatic connection, port 1	G1/8
Pneumatic connection, port 2	G1/8
Pneumatic connection, port 3	G1/4
Pneumatic connection, port 4	G1/4
Materials note	Free of copper and PTFE Conforms to RoHS
Materials information, housing	Aluminum die cast