

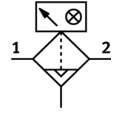
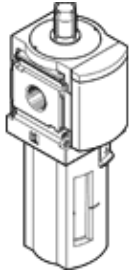
Fine filter

MS6-LFM-1/2-BUV-DA-Z

Part number: 536850

FESTO

1 µm filter, metal bowl guard, fully automatic condensate drain, with differential pressure indicator, flow direction from right to left.



Data sheet

Feature	Value
Size	6
Series	MS
Assembly position	Vertical +/- 5°
Grade of filtration	1 µm
Filter efficiency	99.99 %
Condensate drain	fully automatic
Design structure	Fiber filter
Max. condensate volume	38 cm ³
Bowl guard	integrated as metal shell
Differential pressure display	Visual indicator
Working pressure	2 ... 12 bar
Max. standard flow rate for air quality class	950 l/min
Min. standard flow rate for air quality class	140 l/min
Operating medium	Compressed air in accordance with ISO8573-1:2010 [6:8:4] Inert gases
Corrosion resistance classification CRC	2
Storage temperature	-10 ... 60 °C
Air purity class at output	Compressed air in accordance with ISO8573-1:2010 [2:7:3]
Medium temperature	5 ... 60 °C
Residual oil content	0.5 mg/m ³
Ambient temperature	5 ... 60 °C
Product weight	820 g
Mounting type	Optional Line installation with accessories
Pneumatic connection, port 1	G1/2
Pneumatic connection, port 2	G1/2
Materials note	Free of copper and PTFE Conforms to RoHS
Materials information for seals	NBR
Materials information for filter	Boron silicate fiber
Materials information, housing	Aluminum die cast
Materials information for bowl	Wrought Aluminum alloy