

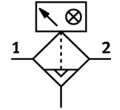
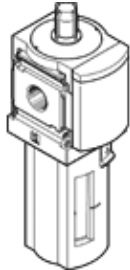
# Fine filter

## MS6-LFM-1/4-BUV-DA

Part number: 536845

FESTO

1 µm filter, metal bowl guard, fully automatic condensate drain, with differential pressure indicator, flow direction from left to right.



## Data sheet

| Feature                                       | Value   |
|---|---|
| Size  | 6   |
| Series  | MS  |
| Assembly position                             | Vertical +/- 5°   |
| Grade of filtration                           | 1 µm  |
| Filter efficiency                             | 99.99 %   |
| Condensate drain                              | fully automatic   |
| Design structure                              | Fiber filter  |
| Max. condensate volume                        | 38 cm <sup>3</sup>  |
| Bowl guard                                    | integrated as metal shell   |
| Differential pressure display                 | Visual indicator  |
| Working pressure                              | 2 ... 12 bar  |
| Max. standard flow rate for air quality class | 950 l/min   |
| Min. standard flow rate for air quality class | 140 l/min   |
| Operating medium                              | Compressed air in accordance with ISO8573-1:2010 [6:8:4]<br>Inert gases |
| Corrosion resistance classification CRC       | 2   |
| Storage temperature                           | -10 ... 60 °C   |
| Air purity class at output                    | Compressed air in accordance with ISO8573-1:2010 [2:7:3]                |
| Medium temperature                            | 5 ... 60 °C   |
| Residual oil content                          | 0.5 mg/m <sup>3</sup>   |
| Ambient temperature                           | 5 ... 60 °C   |
| Product weight                                | 820 g   |
| Mounting type                                 | Optional<br>Line installation<br>with accessories                       |
| Pneumatic connection, port 1                  | G1/4  |
| Pneumatic connection, port 2                  | G1/4  |
| Materials note                                | Free of copper and PTFE<br>Conforms to RoHS                             |
| Materials information for seals               | NBR   |
| Materials information for filter              | Boron silicate fiber  |
| Materials information, housing                | Aluminum die cast   |
| Materials information for bowl                | Wrought Aluminum alloy  |