

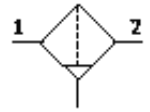
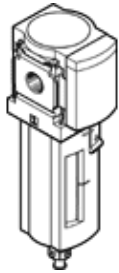
# Activated carbon filter

## MS4-LFX-1/8-U-Z

Part number: 536710

FESTO

Metal bowl, direction of flow: from right to left.



### Data sheet

Feature	Value
Size	4
Series	MS
Assembly position	Vertical +/- 5°
Design structure	Active carbon filter
Bowl guard	integrated as metal shell
Inlet pressure 1	0 ... 14 bar
Standard nominal flow rate	250 l/min
Operating medium	Filtered, unlubricated compressed air, 0.01 µm filtration
Corrosion resistance classification CRC	2
Storage temperature	-10 ... 60 °C
Air purity class at output	1.7.1 per DIN ISO 8573-1
Medium temperature	5 ... 30 °C
Residual oil content	0.003 mg/m <sup>3</sup>
Ambient temperature	-10 ... 60 °C
Product weight	350 g
Mounting type	with accessories Optional Line installation
Pneumatic connection, port 1	G1/8
Pneumatic connection, port 2	G1/8
Materials note	Free of copper and PTFE
Materials information for filter	Active carbon
Materials information, housing	Aluminum die cast
Materials information for bowl	Aluminum die cast Wrought Aluminum alloy
Materials info, viewing window	PA