

Pneumatic valve

VL-5/3E-1/8-B-EX

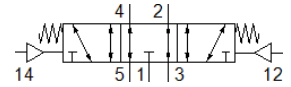
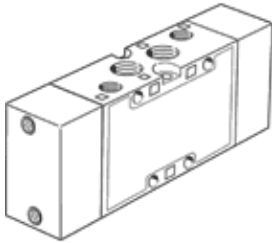
Part number: 536049

Classic - do not use for new projects

FESTO

5/3-way function, center position exhausted

Modern alternatives can be found by entering the first four characters of the type code in the search field.



Data sheet

Feature	Value
Valve function	5/3 exhausted
Type of actuation	pneumatic
Width	26 mm
Standard nominal flow rate	1,000 l/min
Operating pressure MPa	-0.09 ... 1 MPa
Working pressure	-0.9 ... 10 bar
Design structure	Piston slide
Type of reset	mechanical spring
CE symbol (see declaration of conformity)	according to EU-Ex protection guideline (ATEX)
UKCA marking (see declaration of conformity)	To UK EX instructions
ATEX category Gas	II 2G
ATEX category Dust	II 2D
Explosion ignition protection type Gas	Ex h IIC T4 Gb
Explosion ignition protection type Dust	Ex h IIIC T130°C Db
Explosion-proof ambient temperature	-10°C ≤ Ta ≤ +60°C
Explosion protection certification outside the EU	EPL Db (GB) EPL Gb (GB)
Nominal size	8 mm
Grid dimension	27 mm
Exhaust-air function	throttleable
Sealing principle	soft
Assembly position	Any
Manual override	None
Type of piloting	direct
Pilot air supply	external
Flow direction	reversible
Lap	Positive overlap
Pilot pressure MPa	0.3 ... 1 MPa
Pilot pressure	3 ... 10 bar
Max. switching frequency	3 Hz
Switching time off	14 ms
Switching time on	5 ms
Switching time reversal	24 ms
Operating medium	Compressed air in accordance with ISO8573-1:2010 [7:4:4]
Note on operating and pilot medium	Lubricated operation possible (subsequently required for further operation)
Corrosion resistance classification CRC	1 - Low corrosion stress
PWIS conformity	VDMA24364-B1/B2-L
Storage temperature	-40 ... 60 °C
Medium temperature	-10 ... 60 °C
Pilot medium	Compressed air in accordance with ISO8573-1:2010 [7:4:4]
Ambient temperature	-10 ... 60 °C

Feature	Value
Product weight	320 g
Mounting type	with through hole
Pilot air port 12	G1/8
Pilot air port 14	G1/8
Pneumatic connection, port 1	G1/8
Pneumatic connection, port 2	G1/8
Pneumatic connection, port 3	G1/8
Pneumatic connection, port 4	G1/8
Pneumatic connection, port 5	G1/8
Materials note	Conforms to RoHS
Material seals	NBR
Material housing	Aluminum die cast