

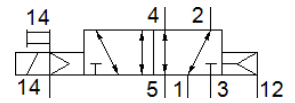
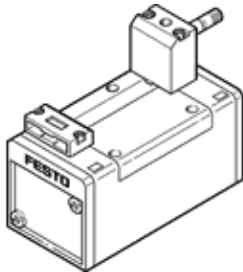
Solenoid valve

MFH-5/2-D-1-S-C-EX

Part number: 535957

FESTO

With manual override, without solenoid coil or socket. Solenoid coil and socket should be ordered separately.



Data sheet

Feature	Value
Valve function	5/2 monostable
Type of actuation	electrical
Width	42 mm
Standard nominal flow rate	1,200 l/min
Working pressure	-0.9 ... 16 bar
Design structure	Piston slide
Type of reset	Air spring
CE symbol (see declaration of conformity)	according to EU-Ex protection guideline (ATEX)
UKCA marking (see declaration of conformity)	To UK EX instructions
ATEX category Gas	II 2G
ATEX category Dust	II 2D
Explosion ignition protection type Gas	Ex h IIC T4 Gb
Explosion ignition protection type Dust	Ex h IIIC T105°C Db
Explosion-proof ambient temperature	-5 °C ≤ Ta ≤ +40°C
Explosion protection certification outside the EU	EPL Db (GB) EPL Gb (GB)
Protection class	IP65
Nominal size	8 mm
Grid dimension	43 mm
Exhaust-air function	throttleable
Sealing principle	soft
Assembly position	Any
Conforms to standard	ISO 5599-1
Manual override	with accessories, detenting Pushing
ISO code	164
Type of piloting	Piloted
Pilot air supply	external
Flow direction	reversible
Lap	Positive overlap
Pilot pressure	2 ... 10 bar
Switching time off	35 ms
Switching time on	23 ms
Max. positive test pulse with logic 0	2,200 μs
Max. negative test pulse with logic 1	3,700 μs
Operating medium	Compressed air in accordance with ISO8573-1:2010 [7:4:4]
Note on operating and pilot medium	Lubricated operation possible (subsequently required for further operation)
Vibration resistance	Transport application test with severity level 1 as per FN 942017-4 and EN 60068-2-6
Shock resistance	Shock test with severity level 2 in accordance with FN 942017-5 and EN 60068-2-27
PWIS conformity	VDMA24364-B1/B2-L

Feature	Value
Medium temperature	-5 ... 40 °C
Sound pressure level	85 dB(A)
Pilot medium	Compressed air in accordance with ISO8573-1:2010 [7:4:4]
Ambient temperature	-5 ... 40 °C
Product weight	390 g
Electrical connection	Via F coil, must be ordered separately
Mounting type	On subbase with through hole
Pilot air port 12	Connection plate size 1 as per ISO 5599-1
Pilot air port 14	Connection plate size 1 as per ISO 5599-1
Pneumatic connection, port 1	Connection plate size 1 as per ISO 5599-1
Pneumatic connection, port 2	Connection plate size 1 as per ISO 5599-1
Pneumatic connection, port 3	Connection plate size 1 as per ISO 5599-1
Pneumatic connection, port 4	Connection plate size 1 as per ISO 5599-1
Pneumatic connection, port 5	Connection plate size 1 as per ISO 5599-1
Materials note	Conforms to RoHS
Material seals	HNBR NBR
Material housing	Aluminum die cast