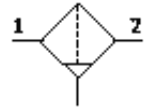
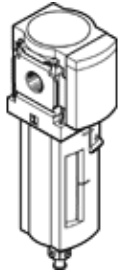


Filter MS4-LF-1/8-CUM-Z

Part number: 535639

FESTO

5 µm filter, metal bowl, manual condensate drain, direction of flow: from right to left.



Data sheet

Feature	Value
Size	4
Series	MS
Assembly position	Vertical +/- 5°
Grade of filtration	5 µm
Condensate drain	manual rotary
Design structure	Sintered filter with centrifugal separator
Max. condensate volume	25 ml
Bowl guard	integrated as metal shell
Inlet pressure 1	0 ... 14 bar
Standard nominal flow rate	1,000 l/min
Operating medium	Compressed air
Corrosion resistance classification CRC	2
Storage temperature	-10 ... 60 °C
Air purity class at output	3.7.- per DIN ISO 8573-1
Medium temperature	-10 ... 60 °C
Ambient temperature	-10 ... 60 °C
Product weight	349 g
Mounting type	with accessories Optional Line installation
Pneumatic connection, port 1	G1/8
Pneumatic connection, port 2	G1/8
Materials note	Free of copper and PTFE
Materials information for seals	NBR
Materials information for filter	PE
Materials information, housing	Aluminum die cast
Materials information for bowl	Aluminum die cast Wrought Aluminum alloy
Materials info, viewing window	PA