

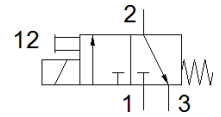
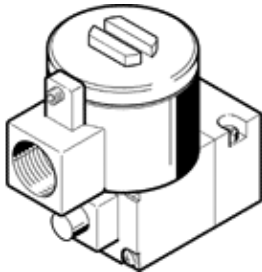
Pilot valve

MGXDH-3/2-1.2-110AC-EX

Part number: 535616

FESTO

with CNOMO port pattern, to ISO 15218
This type is suitable for vacuum.



Data sheet

Feature	Value
Valve function	3/2 closed, monostable
Type of actuation	electrical
Operating pressure MPa	-0.09 ... 0.8 MPa
Working pressure	-0.9 ... 8 bar
Operating pressure	-13.05 ... 116 psi
Design structure	On/off valve
Type of reset	mechanical spring
CE symbol (see declaration of conformity)	according to EU-Ex protection guideline (ATEX)
Explosion protection certification outside the EU	EPL Db (CN) EPL Db (IEC-EX) EPL Gb (CN) EPL Gb (IEC-EX)
Certificate issuing department	ATEX: CML 15 ATEX 1119X CCC-Ex: 2020322307001701 IEC: IECEx CML 17.0147X
ATEX category Gas	II 2G
ATEX category Dust	II 2D
Explosion ignition protection type Gas	ATEX: Ex db IIC T4 Gb CCC-Ex: Ex d IIC T3/T6 Gb
Explosion ignition protection type Dust	Ex tb IIIC T135 °C Db
Explosion-proof ambient temperature	ATEX: -65 °C ≤ Ta ≤ +40 °C CCC-Ex: -20 °C ≤ Ta ≤ +40 °C
Protection class	IP66
Manual override	detenting
Flow direction	non reversible
Duty cycle	100 %
Insulation class	H
Characteristic coil data	110 V AC: 50/60 Hz, pick-up power 7.7 VA, holding power 3.8 VA
Permissible frequency fluctuation	+/- 10 %
Operating medium	Compressed air in accordance with ISO8573-1:2010 [7:4:4]
Note on operating and pilot medium	Lubricated operation possible (subsequently required for further operation)
Corrosion resistance classification CRC	2 - Moderate corrosion stress
PWIS conformity	VDMA24364 zone III
Ambient temperature	-20 ... 80 °C
Mounting type	CNOMO
Materials note	Conforms to RoHS