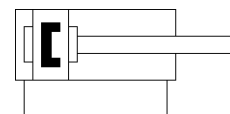
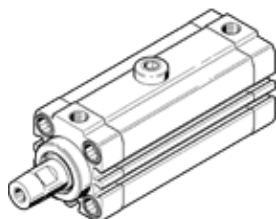


Linear/swivel clamp CLR-50-20-G-P-A-K11-R8

Part number: 535501

FESTO

clamping system with linear motion, standard hole pattern according to ISO 21287. With dust and weld spatter protection.



Data sheet

Feature	Value
Total stroke	41 mm
Piston diameter	50 mm
Piston rod thread	M10
Clamping stroke	20 mm
Cushioning	P: Flexible cushioning rings/plates at both ends
Assembly position	Any
Design structure	Piston Piston rod Cylinder barrel
Position detection	For proximity sensor
Swivel direction	Straight
Variants	spatter protection Dust protection
Working pressure	2 ... 10 bar
Mode of operation	double-acting
Operating medium	Compressed air in accordance with ISO8573-1:2010 [7:4:4]
Note on operating and pilot medium	Lubricated operation possible (subsequently required for further operation)
Corrosion resistance classification CRC	2 - Moderate corrosion stress
PWIS conformity	VDMA24364-B2-L
Ambient temperature	-10 ... 80 °C
Effective clamping force at 0.2 MPa (2 bar, 29 psi)	271 N
Effective clamping force at 0.4 MPa (4 bar, 58 psi)	508 N
Effective clamping force at 0.6 MPa (6 bar, 87 psi)	716 N
Max. tightening torque, tensioning finger screw	47 Nm
Theoretical clamping force at 0.6 MPa (6 bar, 87 psi)	990 N
Product weight	1,690 g
Mounting type	with through hole with internal (female) thread with accessories Optional
Pneumatic connection	G1/8
Material wiper seal	PPS
Material of flange screw	Steel Galvanized
Material cover	Wrought Aluminum alloy coated
Material seals	NBR TPE-U(PU)
Material housing	Wrought Aluminum alloy Smooth anodized
Material piston rod	coated High alloy steel, non-corrosive
Material cylinder barrel	Wrought Aluminum alloy Smooth anodized