

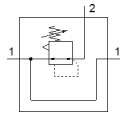
Precision pressure regulator

MS6N-LRPB-1/2-D4-A8-BJ

Part number: 534988

FESTO

indirectly controlled regulators, working pressure up to 2.5 bar.



Data sheet

Feature	Value
Size	6
Series	MS
Actuator lock	Rotary knob with lock
Assembly position	Any
Design structure	Piloted precision diaphragm regulator
Controller function	Output pressure constant with secondary exhaust
Pressure gauge	Prepared for G1/8
Operating pressure MPa	0.1 ... 1.4 MPa
Working pressure	1 ... 14 bar
Pressure regulation range	0.05 ... 2.5 bar
Max. pressure hysteresis	0.02 bar
Flow rate, secondary venting	≥ 450 l/min
Standard nominal flow rate	≥ 2,300 l/min
Operating medium	Compressed air in accordance with ISO8573-1:2010 [7:4:4] Inert gases
Note on operating and pilot medium	Lubricated operation not possible
Corrosion resistance classification CRC	2 - Moderate corrosion stress
PWIS conformity	VDMA24364-B2-L
Storage temperature	-10 ... 60 °C
Medium temperature	-10 ... 60 °C
Ambient temperature	-10 ... 60 °C
Product weight	1,000 g
Mounting type	Front panel installation Line installation with accessories Optional
Pneumatic connection, port 1	1/2 NPT
Pneumatic connection, port 2	1/2 NPT
Pneumatic connection, port 3	G1/4
Materials note	Conforms to RoHS
Material seals	NBR
Material housing	Aluminum