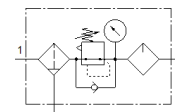
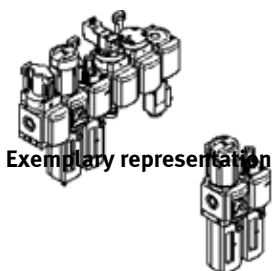


Service unit combination MSB4N

Part number: 532306

FESTO

With NPT thread



Data sheet

Overall data sheet – Individual values depend upon your configuration.

| Feature | Value |
|---|---|
| Size | 4 |
| Series | MS |
| Type of actuation | electrical manual pneumatic |
| Actuator lock | Rotary knob with integrated lock |
| Assembly position | Any Vertical +/- 5° |
| Grade of filtration | 0.01 ... 40 µm |
| Condensate drain | fully automatic manual rotary semi-automatic |
| Design structure | Branching module Active carbon filter Pressure regulator with gauge Start-up valve On/off valve Fiber filter Filter regulator with pressure gauge Filter regulator without pressure gauge Membrane dryer proportional standard mist lubricator Sintered filter with centrifugal separator With non-return function |
| Controller function | Output pressure constant with initial pressure compensation with secondary exhaust with return flow |
| Bowl guard | Plastic guard |
| Differential pressure display | Visual indicator with pressure sensor |
| Pressure gauge | with pressure sensor with pressure gauge |
| Working pressure | 1.5 ... 14 bar |
| Pressure regulation range | 0.3 ... 7 bar |
| Standard nominal flow rate | 800 ... 1,400 l/min |
| Characteristic coil data | 110 V AC: 50/60 Hz, pick-up power 3 VA, holding power 2.4 VA 230 V AC: 50/60 Hz, pick-up power 3 VA, holding power 2.4 VA 24 V DC: 1.5 W 24 V DC: 1.8 W |
| Authorization | c UL us - Recognized (OL) |
| CE symbol (see declaration of conformity) | according to EU-EMV guideline |

| Feature | Value |
|--|---|
| | in accordance with EU RoHS directive |
| UKCA marking (see declaration of conformity) | To UK instructions for EMC To UK RoHS instructions |
| Note on operating and pilot medium | Lubricated operation possible (subsequently required for further operation) |
| Corrosion resistance classification CRC | 2 - Moderate corrosion stress |
| PWIS conformity | VDMA24364-B1/B2-L |
| Storage temperature | -10 ... 60 °C |
| Food-safe | See Supplementary material information |
| Medium temperature | -10 ... 60 °C |
| Ambient temperature | -10 ... 60 °C |
| Mounting type | with accessories |
| Pneumatic connection, port 1 | 1/8 NPT 1/4 NPT |
| Pneumatic connection, port 2 | 1/8 NPT 1/4 NPT |
| Pneumatic connection, port 3 | G1/4 1/4 NPT |
| Material housing | Aluminum die cast |
| Material bowl | PC |