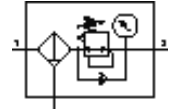


# Filter regulator MS6N-LFR-1/4-D7-CRM-AS-Z

Part number: 531284

FESTO

12 bar maximum output pressure, 5 µm filter, with pressure gauge, lockable regulator head, plastic bowl with plastic bowl guard, manual condensate drain, direction of flow: from right to left.



## Data sheet

Feature	Value
Size	6
Series	MS
Actuator lock	with accessories, lockable
Assembly position	Vertical +/- 5°
Grade of filtration	5 µm
Condensate drain	manual rotary
Design structure	Filter regulator with pressure gauge
Max. condensate volume	38 ml
Controller function	Output pressure constant with secondary exhaust
Bowl guard	Plastic guard
Pressure gauge	with pressure gauge
Pressure control range	0.5 ... 12 bar
Inlet pressure 1	0.8 ... 20 bar
Max. pressure hysteresis	0.25 bar
Standard nominal flow rate	2,200 l/min
Operating medium	Compressed air
Corrosion resistance classification CRC	2
Storage temperature	-10 ... 60 °C
Air purity class at output	3.7.- per DIN ISO 8573-1
Medium temperature	-10 ... 60 °C
Ambient temperature	-10 ... 60 °C
Product weight	875 g
Mounting type	with accessories Optional Front panel installation Line installation
Pneumatic connection, port 1	NPT1/4-18
Pneumatic connection, port 2	NPT1/4-18
Materials information for seals	NBR
Materials information, housing	Aluminum die cast
Materials information for bowl	PC
Material information, isolating disc	POM