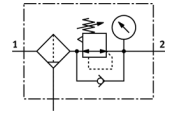


# Filter regulator MS6-LFR-1/4-D7-CUM-AS-Z

Part number: 530343

FESTO

12 bar maximum output pressure, 5 µm filter, with pressure gauge, lockable regulator head, metal bowl, manual condensate drain, direction of flow: from right to left.



## Data sheet

| Feature                                 | Value   |
|---|---|
| Size                                    | 6   |
| Series                                  | MS  |
| Actuator lock                           | Rotary knob with lock with accessories, lockable                              |
| Assembly position                       | Vertical +/- 5°   |
| Grade of filtration                     | 5 µm  |
| Condensate drain                        | manual rotary   |
| Design structure                        | Filter regulator with pressure gauge  |
| Max. condensate volume                  | 38 ml   |
| Controller function                     | Output pressure constant with secondary exhaust                               |
| Bowl guard                              | integrated as metal shell   |
| Pressure gauge                          | with pressure gauge   |
| Working pressure                        | 0.8 ... 20 bar  |
| Pressure control range                  | 0.5 ... 12 bar  |
| Max. pressure hysteresis                | 0.25 bar  |
| Standard nominal flow rate              | 2,200 l/min   |
| Operating medium                        | Compressed air to ISO 8573-1:2010 [-:4:-]<br>Inert gases                      |
| Corrosion resistance classification CRC | 2   |
| Storage temperature                     | -10 ... 60 °C   |
| Air purity class at output              | Compressed air in accordance with ISO8573-1:2010 [6:4:4]                      |
| Medium temperature                      | -10 ... 60 °C   |
| Ambient temperature                     | -10 ... 60 °C   |
| Product weight                          | 1,087 g   |
| Mounting type                           | Optional<br>Front panel installation<br>Line installation<br>with accessories |
| Pneumatic connection, port 1            | G1/4  |
| Pneumatic connection, port 2            | G1/4  |
| Materials note                          | Conforms to RoHS  |
| Materials information for seals         | NBR   |
| Materials information, housing          | Aluminum die cast   |
| Materials information for bowl          | Wrought Aluminum alloy  |
| Material information, isolating disc    | POM   |