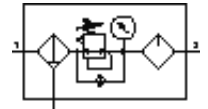
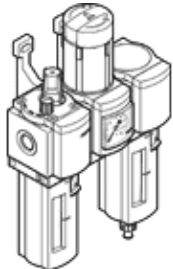


Service unit combination MSB6-1/2:H2N2M1-WP-Z

Part number: 530213

FESTO

Consisting of filter, pressure regulator, lubricator and wall mounting plate. 7 bar maximum output pressure, 40 µm filter, with pressure gauge, plastic bowl with plastic bowl guard, manual condensate drain, direction of flow: from right to left.



Data sheet

Feature	Value
Size	6
Series	MS
Actuator lock	Rotary knob with integrated lock
Assembly position	Vertical +/- 5°
Grade of filtration	40 µm
Condensate drain	manual rotary
Design structure	Pressure regulator with gauge Standard filter Standard oil-mist lubricator
Bowl guard	Plastic guard
Pressure gauge	with pressure gauge
Pressure control range	1 ... 7 bar
Inlet pressure 1	1.5 ... 18 bar
Standard nominal flow rate	4,700 l/min
Operating medium	Compressed air
Corrosion resistance classification CRC	2
Product weight	2,000 g
Mounting type	with accessories
Pneumatic connection, port 1	G1/2
Pneumatic connection, port 2	G1/2