

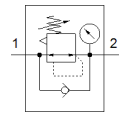
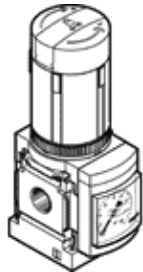
Pressure regulator MS4-LR-1/4-D5-AS

Part number: 529415

★ Core product range

4 bar maximum output pressure, with pressure gauge, lockable regulator head, direction of flow: from left to right.

FESTO



Data sheet

Feature	Value
Size	4
Series	MS
Actuator lock	Rotary knob with lock with accessories, lockable
Assembly position	Any
Design structure	directly-controlled diaphragm regulator
Controller function	Output pressure constant with secondary exhaust with return flow
Pressure gauge	with pressure gauge
Operating pressure MPa	0.08 ... 1.4 MPa
Working pressure	0.8 ... 14 bar
Pressure regulation range	0.3 ... 4 bar
Max. pressure hysteresis (MPa)	0.025 MPa
Max. pressure hysteresis	0.25 bar 3.625 psi
Standard nominal flow rate	2,100 l/min
Operating medium	Compressed air in accordance with ISO8573-1:2010 [7:4:4] Inert gases
Note on operating and pilot medium	Lubricated operation possible (subsequently required for further operation)
Corrosion resistance classification CRC	2 - Moderate corrosion stress
PWIS conformity	VDMA24364-B1/B2-L
Storage temperature	-10 ... 60 °C
Food-safe	See Supplementary material information
Medium temperature	-10 ... 60 °C
Ambient temperature	-10 ... 60 °C
Product weight	225 g
Mounting type	Front panel installation Line installation with accessories Optional
Pneumatic connection, port 1	G1/4
Pneumatic connection, port 2	G1/4
Materials note	Conforms to RoHS
Material of connecting plate	Aluminum die cast
Material control panel	PA POM
Material seals	NBR
Material housing	Aluminum die cast
Material membrane	NBR