

Filter regulator

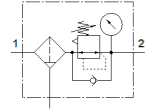
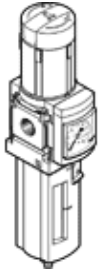
MS6-LFR-1/2-D7-EUM-AS

Part number: 529192

★ Core product range

12 bar maximum output pressure, 40 µm filter, with pressure gauge, lockable regulator head, metal bowl, manual condensate drain, direction of flow: from left to right.

FESTO



Data sheet

Feature	Value
Size	6
Series	MS
Actuator lock	Rotary knob with lock with accessories, lockable
Assembly position	Vertical +/- 5°
Grade of filtration	40 µm
Condensate drain	manual rotary
Design structure	Filter regulator with pressure gauge
Max. condensate volume	38 ml
Controller function	Output pressure constant with secondary exhaust
Bowl guard	integrated as metal shell
Pressure gauge	with pressure gauge
Operating pressure MPa	0.08 ... 2 MPa
Working pressure	0.8 ... 20 bar
Pressure regulation range	0.5 ... 12 bar
Max. pressure hysteresis (MPa)	0.025 MPa
Max. pressure hysteresis	0.25 bar 3.625 psi
Standard nominal flow rate	4,500 l/min
Operating medium	Compressed air to ISO 8573-1:2010 [-:4:-] Inert gases
Corrosion resistance classification CRC	2 - Moderate corrosion stress
PWIS conformity	VDMA24364-B1/B2-L
Storage temperature	-10 ... 60 °C
Food-safe	See Supplementary material information
Air purity class at output	Compressed air in accordance with ISO8573-1:2010 [7:4:4]
Medium temperature	-10 ... 60 °C
Ambient temperature	-10 ... 60 °C
Product weight	1,087 g
Mounting type	Front panel installation Line installation with accessories Optional
Pneumatic connection, port 1	G1/2
Pneumatic connection, port 2	G1/2
Materials note	Conforms to RoHS
Material control panel	PA POM
Material seals	NBR
Material filter	PE
Material housing	Aluminum die cast
Material membrane	NBR
Material bowl	Wrought Aluminum alloy
Material separating plate	POM