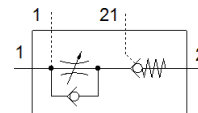
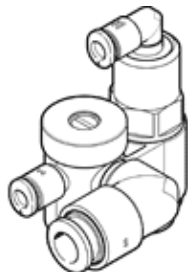


# One-way flow control valve GRXA-HG-1/8-QS-4

Part number: 525667  
Product to be discontinued

FESTO

With stopper function and QS push-in connector  
Type to be discontinued. Available until 2019. See Support Portal for alternative products.



## Data sheet

Feature	Value
Valve function	One-way flow control function for exhaust air
Pneumatic connection, port 1	QS-4
Pneumatic connection, port 2	G1/8
Type of actuation	pneumatic
Adjusting element	Slotted head screw
Mounting type	Threaded with external (male) thread
Standard nominal flow rate in flow control direction	130 l/min
Pilot pressure	2 ... 10 bar
Ambient temperature	-10 ... 60 °C
Assembly position	Any
Operating pressure complete temperature range	0.5 ... 10 bar
Standard flow rate in direction of flow control: 6 -> 0 bar	210 l/min
Standard flow rate in non-return direction: 6 -> 0 bar, actuated	220 ... 250 l/min
Standard flow rate in non-return direction: 6 -> 0 bar, unactuated	230 ... 260 l/min
Standard nominal flow rate in non-return direction, actuated	100 ... 140 l/min
Standard nominal flow rate in non-return direction, unactuated	100 ... 140 l/min
Switching time off	44 ms
Switching time on	6 ms
Operating medium	Compressed air in accordance with ISO8573-1:2010 [7:4:4]
Note on operating and pilot medium	Lubricated operation possible (subsequently required for further operation)
Storage temperature	-10 ... 40 °C
Medium temperature	-10 ... 60 °C
Pilot medium	Compressed air in accordance with ISO8573-1:2010 [7:4:4]
Nominal tightening torque	3.5 Nm
Tolerance for nominal tightening torque	± 10 %
Product weight	28.2 g
Materials note	Conforms to RoHS
Material cover	Wrought Aluminum alloy Anodized
Material seals	NBR
Material hollow bolt	Wrought Aluminum alloy Anodized
Material release ring	POM
Material adjusting screw	Brass
Material swivel fitting	POM