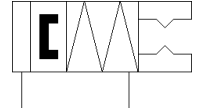
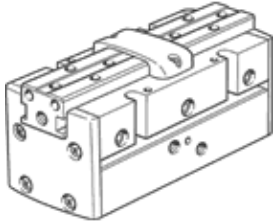


# Parallel gripper HGPP-32-A-G2

Part number: 525666

FESTO

Precise, for position sensing via hall effect sensor or inductive sensors.  
With gripping force retention when closing...-G2.



## Data sheet

Feature	Value
Size	32
Stroke per gripper jaw	12.5 mm
Max. replacement accuracy	0.1 mm
Repetition accuracy, gripper	≤ 0.02 mm
Number of gripper fingers	2
Drive system	pneumatic
Mode of operation	double-acting
Gripper function	Parallel
Gripper force back-up	On closing
Design structure	Rack and pinion
Position detection	For Hall sensors For inductive sensors
Working pressure	5 ... 8 bar
Max. operating frequency of gripper	4 Hz
Min. opening time at 0.6 MPa (6 bar, 87 psi)	103 ms
Min. closing time at 0.6 MPa (6 bar, 87 psi)	101 ms
Max. mass per external gripper finger	300 g
Operating medium	Compressed air in accordance with ISO8573-1:2010 [7:4:4]
Note on operating and pilot medium	Lubricated operation possible (subsequently required for further operation)
Corrosion resistance classification CRC	2 - Moderate corrosion stress
PWIS conformity	VDMA24364-B2-L
Ambient temperature	5 ... 60 °C
Max. force on gripper jaw Fz static	720 N
Max. torque at gripper Mx static	30 Nm
Max. torque at gripper My static	30 Nm
Max. torque at gripper Mz static	30 Nm
Product weight	1,427 g
Mounting type	with internal (female) thread
Pneumatic connection	G1/8
Materials note	Conforms to RoHS
Material cover cap	POM
Material housing	Hard anodised wrought aluminium alloy
Material gripper jaws	Wrought aluminium alloy, nickel-plated