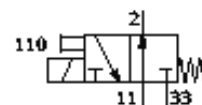
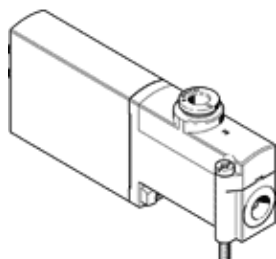


# Solenoid valve

## MHP3-M1H-3/20-QS-6

Part number: 525162

FESTO



### Data sheet

Feature	Value
Valve function	3/2 open, monostable
Type of actuation	electrical
Width	14 mm
Standard nominal flow rate	200 l/min
Working pressure	-0.9 ... 8 bar
Design structure	Pressure-relieved poppet valve
Type of reset	mechanical spring
Protection class	IP65
Authorization	c UL us - Recognized (OL)
Nominal size	3 mm
Grid dimension	19 mm
Exhaust-air function	throttleable
Sealing principle	soft
Assembly position	Any
Manual override	Pushing
Type of piloting	direct
Flow direction	reversible with restrictions
Working pressure, reversible	-0.9 ... 0 bar
Maximum switching frequency	130 Hz
Switching time off	4.5 ms
Switching time on	8 ms
Duty cycle	100%
Characteristic coil data	24V DC: 3,7W
Permissible voltage fluctuation	+/- 10 %
Operating medium	Filtered, unlubricated compressed air, 40 µm filtration Filtered, lubricated compressed air, 40 µm filtration
Corrosion resistance classification CRC	2
Medium temperature	-5 ... 40 °C
Ambient temperature	-5 ... 40 °C
Product weight	120 g
Electrical connection	Plug 2-pin
Mounting type	On PR manifold
Pneumatic connection, 11	Subbase
Pneumatic connection, port 2	QS-6
Pneumatic connection, 33	Subbase
Materials note	Free of copper and PTFE
Materials information for seals	HNBR NBR
Materials information, housing	Zinc die-casting coated
Screw material data	Steel Galvanized