

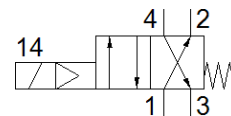
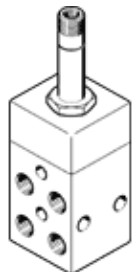
Solenoid valve

MF-4-1/8

Part number: 4612
Product to be discontinued

FESTO

Type to be discontinued. Available until 2022. See Support Portal for alternative products.



Data sheet

Feature	Value
Valve function	4/2 monostable
Type of actuation	electrical
Standard nominal flow rate	120 l/min
Operating pressure MPa	0.3 ... 0.8 MPa
Working pressure	3 ... 8 bar
Design structure	Poppet valve with spring return
Type of reset	mechanical spring
Protection class	IP65
Nominal size	3.5 mm
Exhaust-air function	throttleable
Sealing principle	soft
Assembly position	Any
Manual override	None
Type of piloting	Piloted
Flow direction	non reversible
Switching time off	23 ms
Switching time on	13 ms
Operating medium	Compressed air in accordance with ISO8573-1:2010 [7:4:4]
Note on operating and pilot medium	Lubricated operation possible (subsequently required for further operation)
Storage temperature	-20 ... 60 °C
Medium temperature	-10 ... 60 °C
Ambient temperature	-5 ... 40 °C
Mounting type	with through hole
Pneumatic connection, port 1	G1/8
Pneumatic connection, port 2	G1/8
Pneumatic connection, port 3	G1/8
Pneumatic connection, port 4	G1/8
Material seals	NBR TPE-U(PU)
Material housing	Wrought Aluminum alloy Anodized