

# Solenoid valve

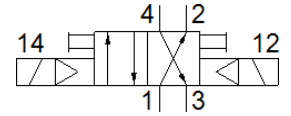
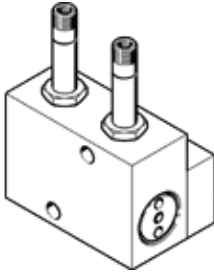
## JMF-4-1/8

Part number: 4556  
 Product to be discontinued



With manual override. Without sockets.

Type to be discontinued. Available until 2022. See Support Portal for alternative products.



## Data sheet

Feature	Value
Valve function	4/2 bistable
Type of actuation	electrical
Working pressure	2 ... 8 bar
Type of piloting	Piloted
Flow direction	non reversible
Pneumatic connection, port 1	G1/8
Pneumatic connection, port 2	G1/8
Pneumatic connection, port 3	G1/8
Pneumatic connection, port 4	G1/8
Pneumatic connection, port 5	G1/8
Material seals	NBR