

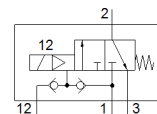
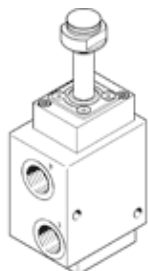
# Valve

## VOFC-LT-M32C-MC-G12-F19

Part number: 4514748

FESTO

3/2 monostable, F19 armature system.



## Data sheet

| Feature                                 | Value  |
|---|--|
| Valve function                          | 3/2 closed, monostable   |
| Type of actuation                       | electrical   |
| Width                                   | 51 mm  |
| Standard nominal flow rate              | 2,794 l/min  |
| Operating pressure MPa                  | 0.2 ... 0.8 MPa  |
| Working pressure                        | 2 ... 8 bar  |
| Design structure                        | Pilot-actuated piston poppet valve   |
| Type of reset                           | mechanical spring  |
| Protection class                        | IP65   |
| Certificate issuing department          | TÜV 968/V 1251.00/21   |
| Nominal size                            | 12 mm  |
| Sealing principle                       | Hard   |
| Assembly position                       | Any  |
| Manual override                         | None   |
| Type of piloting                        | Piloted  |
| Pilot air supply                        | external<br>Internal   |
| Flow direction                          | non reversible   |
| Safety function                         | Safe venting   |
| Safety Integrity Level (SIL)            | Product can be used in SRP/CS up to SIL 3 (high demand)<br>bis SIL 3 Low Demand mode |
| Note on working pressure                | 0 - 0.8 MPa with external pilot air  |
| Flow rate Kv ventilation                | 2.56 m <sup>3</sup> /h   |
| Flow rate Kv exhaust                    | 3.17 m <sup>3</sup> /h   |
| Standard nominal flow rate 2-3          | 3,466 l/min  |
| Switching time off                      | 14 ms  |
| Switching time on                       | 25 ms  |
| Operating medium                        | Druckl. ISO8573-1:2010[7:2:2]  |
| Corrosion resistance classification CRC | 4 - Very high corrosion stress   |
| PWIS conformity                         | VDMA24364 zone III   |
| Medium temperature                      | -25 ... 60 °C  |
| Ambient temperature                     | -25 ... 60 °C  |
| Product weight                          | 880 g  |
| Pneumatic connection, port 1            | G1/2   |
| Pneumatic connection, port 2            | G1/2   |
| Pneumatic connection, port 3            | G1/2   |
| Materials note                          | Conforms to RoHS   |
| Material seals                          | NBR  |
| Material housing                        | Aluminium (Ematal coated)  |