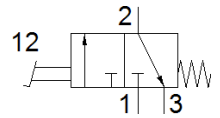
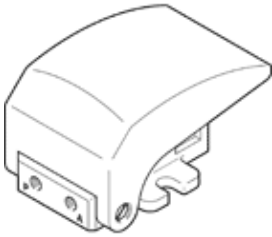


Push-button valve F-3-M5

Part number: 4452

FESTO

This type is suitable for vacuum.



Data sheet

Feature	Value
Valve function	3/2 closed, monostable
Standard nominal flow rate	80 l/min
Working pressure	-0.9 ... 8 bar
Type of reset	mechanical spring
Type of piloting	direct
PWIS conformity	VDMA24364-B1/B2-L
Product weight	235 g
Pneumatic connection, port 1	M5
Pneumatic connection, port 2	M5
Pneumatic connection, port 3	M5