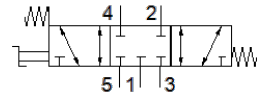


# Hand lever valve VHEF-HS-P53C-M-N18

Part number: 4414857

FESTO



## Data sheet

| Feature                                 | Value                                                                       |
|-----------------------------------------|-----------------------------------------------------------------------------|
| Valve function                          | 5/3 closed                                                                  |
| Type of actuation                       | manual                                                                      |
| Width                                   | 20 mm                                                                       |
| Standard nominal flow rate              | 700 l/min                                                                   |
| Operating pressure MPa                  | -0.095 ... 1 MPa                                                            |
| Working pressure                        | -0.95 ... 10 bar                                                            |
| Design structure                        | Piston slide                                                                |
| Type of reset                           | mechanical spring                                                           |
| Nominal size                            | 5.2 mm                                                                      |
| Exhaust-air function                    | throttleable                                                                |
| Instructions for use                    | Actuate only manually                                                       |
| Sealing principle                       | soft                                                                        |
| Assembly position                       | Any                                                                         |
| Type of piloting                        | direct                                                                      |
| Flow direction                          | reversible                                                                  |
| Lap                                     | Positive overlap                                                            |
| Max. switching frequency                | 0.5 Hz                                                                      |
| Operating medium                        | Compressed air in accordance with ISO8573-1:2010 [7:::]                     |
| Note on operating and pilot medium      | Lubricated operation possible (subsequently required for further operation) |
| Corrosion resistance classification CRC | 1 - Low corrosion stress                                                    |
| PWIS conformity                         | VDMA24364-B1/B2-L                                                           |
| Medium temperature                      | -10 ... 60 °C                                                               |
| Ambient temperature                     | -10 ... 60 °C                                                               |
| Actuation torque                        | 0.7 Nm                                                                      |
| Max. force on actuator                  | 200 N                                                                       |
| Max. transverse force on actuator       | 200 N                                                                       |
| Product weight                          | 265 g                                                                       |
| Mounting type                           | Front panel installation<br>with through hole<br>Optional                   |
| Pneumatic connection, port 1            | 1/8 NPT                                                                     |
| Pneumatic connection, port 2            | 1/8 NPT                                                                     |
| Pneumatic connection, port 3            | 1/8 NPT                                                                     |
| Pneumatic connection, port 4            | 1/8 NPT                                                                     |
| Pneumatic connection, port 5            | 1/8 NPT                                                                     |
| Materials note                          | Conforms to RoHS                                                            |
| Material cover                          | PA-reinforced                                                               |
| Material seals                          | NBR                                                                         |
| Material housing                        | Anodised wrought aluminium alloy                                            |
| Material lever                          | PA-reinforced                                                               |