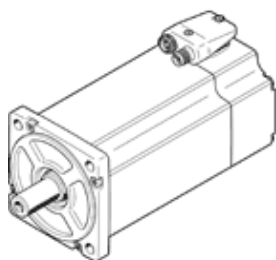


Servomotor EMME-AS-100-S-HS-AMX

Part number: 4267596
Product to be discontinued

FESTO

Without gearing, without brake.



Data sheet

| Feature | Value |
|--|--|
| Ambient temperature | -10 ... 40 °C |
| Storage temperature | -20 ... 70 °C |
| Relative air humidity | 0 - 90 % |
| Conforms to standard | IEC 60034 |
| Insulation protection class | F |
| Rating class according to EN 60034-1 | S1 |
| Protection class | IP21 |
| Electrical connector system | Plug |
| Materials note | Conforms to RoHS |
| Corrosion resistance classification CRC | 0 - No corrosion stress |
| PWIS conformity | VDMA24364 zone III |
| Authorization | RCM Mark c UL us - Recognized (OL) |
| CE symbol (see declaration of conformity) | according to EU-EMV guideline according to EU low voltage guideline in accordance with EU RoHS directive |
| UKCA marking (see declaration of conformity) | To UK instructions for electrical equipment To UK instructions for EMC To UK RoHS instructions |
| Nominal operating voltage DC | 565 V |
| Nominal voltage DC | 565 V |
| Type of winding switch | Star inside |
| Number of pole pairs | 3 |
| Standstill torque | 5.6 Nm |
| Nominal torque | 4.8 Nm |
| Peak torque | 22.4 Nm |
| Nominal rotary speed | 3,000 1/min |
| Max. speed | 3,910 1/min |
| Nominal motor power | 1,500 W |
| Continuous open-circuit current | 3.4 A |
| Nominal motor current | 3 A |
| Peak current | 13.6 A |
| Motor constant | 1.6 Nm/A |
| Voltage constant, phase-to-phase | 102.2 mVmin |
| Phase-phase winding resistance | 4.6 Ohm |
| Phase-phase winding inductance | 15.5 mH |
| Overall mass moment of inertia at power take-off | 4.84 kgcm ² |
| Product weight | 6,250 g |
| Permissible axial shaft load | 130 N |
| Permissible radial shaft load | 650 N |
| Rotor position sensor | Safety Enc. absolut multi turn |
| Rotary position encoder interface | HIPERFACE® |
| Rotary position encoder measuring principle | Optical |
| Rotor position encoder, sinusoidal/cosinusoidal periods per revolution | 128 |

| Feature | Value |
|--|--|
| Rotor position encoder, typical resolution | 15 Bit |
| Rotor position encoder, typical angular accuracy | 20 arcmin |
| Safety Integrity Level (SIL), component parts | SIL 2, rotor position encoder SILCL 2, rotor position encoder |
| Performance Level (PL), component parts | Category 3, Performance Level d, rotor position encoder |
| PFHd, component parts | 1.3 x 10E-8, rotor position encoder |
| Duration of use Tm, component parts | 20 years, rotor position encoder |
| MTTFd, subcomponent | 874 years, rotor position encoder |
| Energy efficiency | ENEFF (CN) / Class 2 |