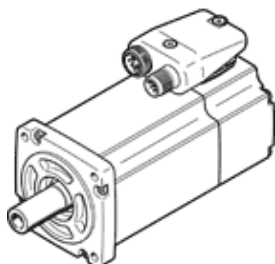


Servomotor EMME-AS-60-S-LS-AMX

Part number: 4267572
Product to be discontinued

FESTO

Without gearing, without brake.



Data sheet

Feature	Value
Ambient temperature	-10 ... 40 °C
Storage temperature	-20 ... 70 °C
Relative air humidity	0 - 90 %
Conforms to standard	IEC 60034
Insulation protection class	F
Rating class according to EN 60034-1	S1
Protection class	IP21
Electrical connector system	Plug
Materials note	Conforms to RoHS
Corrosion resistance classification CRC	0 - No corrosion stress
PWIS conformity	VDMA24364 zone III
Authorization	RCM Mark c UL us - Recognized (OL)
CE symbol (see declaration of conformity)	according to EU-EMV guideline according to EU low voltage guideline in accordance with EU RoHS directive
UKCA marking (see declaration of conformity)	To UK instructions for electrical equipment To UK instructions for EMC To UK RoHS instructions
Nominal operating voltage DC	360 V
Nominal voltage DC	360 V
Type of winding switch	Star inside
Number of pole pairs	3
Standstill torque	0.7 Nm
Nominal torque	0.6 Nm
Peak torque	2.8 Nm
Nominal rotary speed	3,000 1/min
Max. speed	5,131 1/min
Nominal motor power	190 W
Continuous open-circuit current	0.9 A
Nominal motor current	0.8 A
Peak current	3.6 A
Motor constant	0.75 Nm/A
Voltage constant, phase-to-phase	49.6 mVmin
Phase-phase winding resistance	26.4 Ohm
Phase-phase winding inductance	31.9 mH
Overall mass moment of inertia at power take-off	0.22 kgcm ²
Product weight	1,300 g
Permissible axial shaft load	50 N
Permissible radial shaft load	250 N
Rotor position sensor	Safety Enc. absolut multi turn
Rotary position encoder interface	HIPERFACE®
Rotary position encoder measuring principle	Optical
Rotor position encoder, sinusoidal/cosinusoidal periods per revolution	128

Feature	Value
Rotor position encoder, typical resolution	15 Bit
Rotor position encoder, typical angular accuracy	20 arcmin
Safety Integrity Level (SIL), component parts	SIL 2, rotor position encoder SILCL 2, rotor position encoder
Performance Level (PL), component parts	Category 3, Performance Level d, rotor position encoder
PFHd, component parts	1.3 x 10E-8, rotor position encoder
Duration of use Tm, component parts	20 years, rotor position encoder
MTTFd, subcomponent	874 years, rotor position encoder